

2005 Annual report

based on Government Decree No. 323/2005, which specifies the extent of annual report

§ 1a

Muzeum loutkářských kultur v Chrudimi

The Museum of Puppets in Chrudim

Břetislavova 74, 537 60 Chrudim
IČO (Organisation Identification No.) 00412830
Telephone +420 469 620 310
Telephone/fax +420 469 620 650
e-mail: puppets@cps.cz
<http://www.puppets.cz>

Opening time:

Permanent exhibition and short-term exhibitions:

IV – V, IX: Daily 9.00 to 12.00 a.m. and 1.00 to 5.00 p.m.

VI – VIII: Daily 9.00 to 12.00 a.m. and 1.00 to 6.00 p.m.

X – III: Monday – Friday 9.00 to 12.00 a.m. and 1.00 to 5.00 p.m., Saturday-Sunday
1.00 to 5.00 p.m.

(Last visitors are allowed to come in one hour before lunch break or one hour before the end of the opening time.)

Museum closed: 1.-15.1., Easter Monday, 24.-26.12. a 31.12.

Museum Library:

Tuesday and Thursday 9.00 a.m. to 2.00 p.m.

§ 1b

Mode of Establishment and Museum Promoter:

The Museum is an institution receiving contributions from the National Budget. It was established in 1972 by the East Bohemian Regional National Committee in Hradec Králové, which acted as its promoter until its own demise in December 31,1992. Since January 1, 1993, the Czech Ministry of Culture has been acting as the Museum promoter.

The Mission and History of the Museum:

The Museum of Puppeteer Cultures (Puppet Museum) acquires, gathers together, keeps, makes records of, professionally processes and displays for the general public, evidence of the development of the Puppet Theatre, both Czech and world-wide. It first

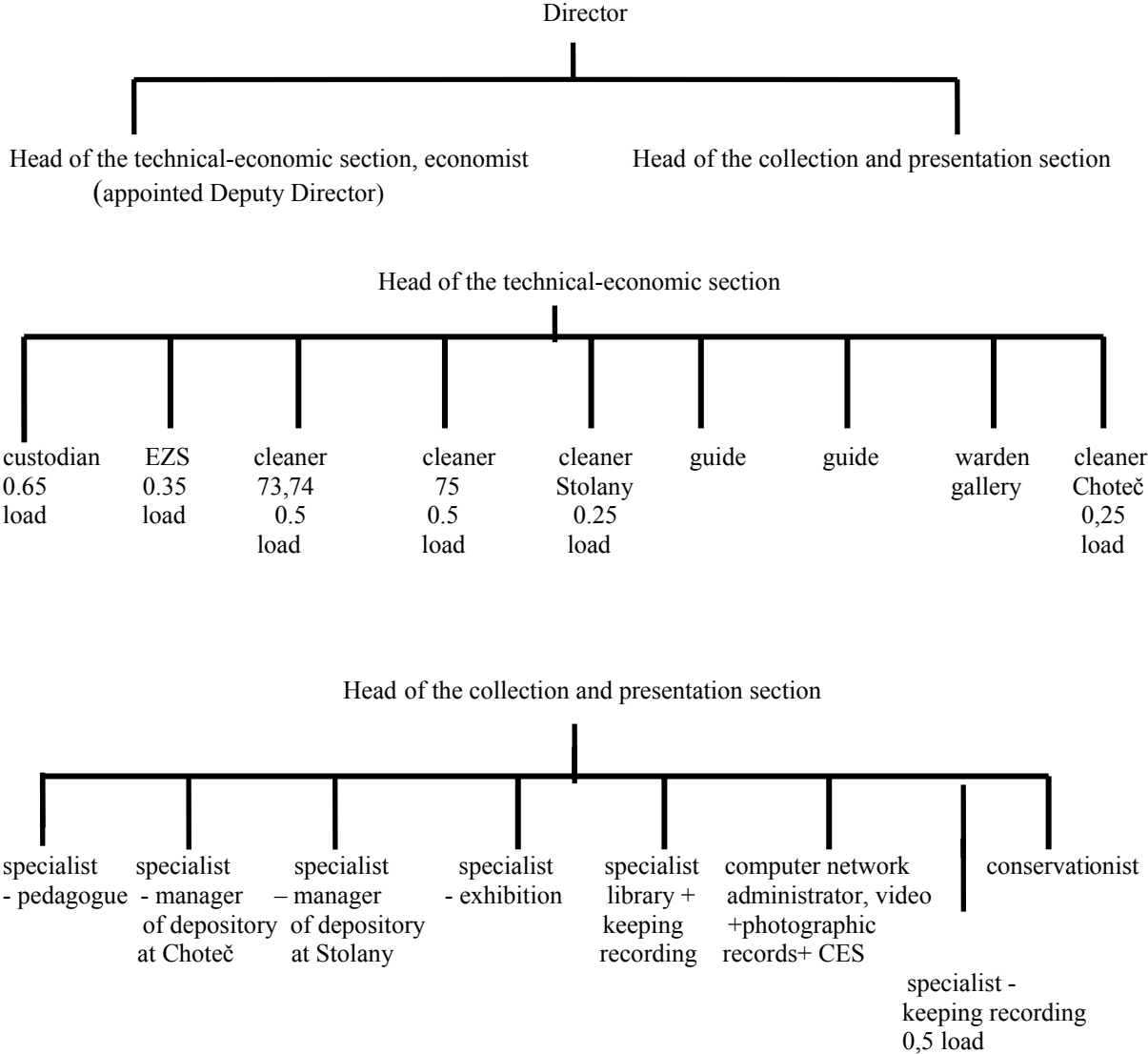
opened on July 2, 1972. It is housed in a splendid Renaissance building (No. 74 – a first category cultural monument, registered under No. 758) erected by Matěj Mydlář, a citizen of Chrudim, in 1573 – 1576. His son Daniel later added a small tower in the form of a minaret. The town authorities renovated the house in the sixties of the last century.

Now, the Museum has also spread its exhibits to a neighbouring house (No. 75 – a second category cultural monument, No. 4548).

The creation of the museum represented fulfilment of a long-cherished idea to establish a museum of puppets from all over the world which was first broached back in 1929 at the constituent congress of the International Puppet Organisation, UNIMA, held in Prague. The foundation stone of the museum’s exhibits was the private collection of Dr. Jana Malík (1904 - 1980), who was the general secretary of UNIMA for many years, and gifts from the UNIMA national centres. The number of exhibits has been gradually expanded and supplemented.

§ 1 c

Organisational Structure:



Permanent staff of the Museum as on December 31, 2005

Exnarová Alena, Mgr.	Director, head of the collection and presentation section	alena.exnarova@puppets.cz , mobil 604 280 147
Holečková Alena	appointed Deputy Director, Head of the technical-economic section, economist	alena.holeckova@puppets.cz mobil 739 084 728
Sbírkový a prezentační úsek:		
Baboráková Jana	Conservationist	
Boušková Irena, Mgr.	Specialist - pedagogue	irena.bouskova@puppets.cz
Breberová Marcela, Mgr.	Specialist – manager of depository at Chotec	marcela.breberova@puppets.cz
Líbal Tomáš	Computer network administrator, video and photographic records, CES	tomas.libal@puppets.cz
Licek Radomír	Specialist – manager of depository at Stolany	radek.licek@puppets.cz
Matysová Dagmar	Specialist – keeping recording	
Studníčková Hana, Ing.	Specialist – foreign puppetry + mobile exhibitions	hana.studnickova@puppets.cz
Šulajová Hana	Specialist – library + keeping records	hana.sulajova@puppets.cz
Technickoekonomický úsek:		
Brunclík Václav	Stolany- cleaner + EZS	
Brunclíková Václava	Cleaner 73+74 + warden	
Geletová Libuše	guide	Tel. 469 620 310
Lédlová Jaroslava	Weekend guide	Tel. 469 620 310
Lohniská Jana	Chotec - cleaner + EZS	
Postupa Ladislav	Custodian + EZS	Mobil 739 039 647
Skopalíková Emílie	Warden in the gallery	
Šídlo Pavel	Warden in the gallery	

Consultative bodies

Collection Commission:

PhDr. Jaroslav Blecha, head of the theatre section of the Moravian Provincial Museum in Brno

Marcela Breberova, specialist, Puppet Museum in Chrudim

Milena Burdychova, Director of the District Museum in Chrudim

Jarmil Chladek, former Director of the Puppet Museum in Chrudim

Jindřiska Patkova, specialist in the theatre section of the National Museum in Prague

Dr. Zdenek Zahradnik, Director of the East Bohemian Museum in Hradec Kralove

The Collections Commission met on November 15, 2005.

Specialised Council of the Museum:

The Specialised Council of the Museum was nominated for three years dating from October 1, 2004, composed as follows:

Stanislav Doubrava, Director of the Naive Theatre in Liberec

Roman Kosek, Director of the Municipal Museum and Gallery in Litomyšl

Nina Malikova, editor-in-chief of the Puppet magazine and lecturer at DAMU (Academy of Dramatic Arts), Prague

Iva Malinova, Head of Nursery School, Sv.Cech Street in Chrudim

Nada Pemlova, Head of the Cultural Department, Regional Administration, Pardubice Region (chairperson)

Ivan Slejska, Head of the Cultural Department, Town Council, Chrudim

Alois Tomanek, puppet stage designer and teacher

- representing the Puppet Museum in Chrudim:

Alena Exnarova, Museum Director

Alena Holeckova, head of the technical-economic section and appointed Deputy Director

The Specialised Council of the Museum met on February 25, 2005 . It mainly commented on the annual report for 2004, the plan of work for 2005 and the chief tasks of the Museum in 2006.

Anoutline of principal activities of organisation

I. Collection of and Care for Specimens

Purchases:

	article	CZK
1.	Three Chinese puppets	18 000.-
2.	Puppet theatre passed on by P.Feygl from Chrudim (96 puppets, 25-cm tall, theatre, scenery, accessories)	140 000.-
3.	Three devils, marionettes dating from early 20 th century, about 85 cm tall, carving	63 000.-
4.	Puppet theatre created by Dr. Jiří Lorman between 1920 and 1940, built into the attic of a villa at Ořechovka in Prague	50 000.- (part-payment of Kc 5.000.- made, the balance owing to be paid in 2006)
5.	Storch's family puppet theatre with proscenium by Vít Skála, dating from 1926, with scenery by Skála and Salač	5 000.-
6.	A family puppet theatre with proscenium by Artuš Scheiner, a scenery set, 36 puppets, 18 cm tall – everything damaged by additional painting and inexpert adjustments	10 000.-
7.	Devil – a 20-cm torso of a puppet, without a leg and horns, carving	300.-

8.	Photographs documenting the 54 th Puppeteer Chrudim, the annual national amateur puppet festival (70 black-and-white photographs + CD-ROM)	4 600.-
9.	(paid in 2005)	245 900.-

Donations:

1.	Flat paper puppets made by Josef Matěj Gottlieb (in later years the staging master of the National Theatre in Prague) when he was serving in the army during the First World War (1915-16) – a donation from Ms Růžena Gottliebová-Křížková
2.	Eleven portraits (drawings) of puppeteers, from the property of the late artist Milada Trčková – a gift from Mr and Mrs Trčka
3.	A puppet – marionette, a black-haired girl – a gift from Ms L. Šteflová
4.	A marionette – self-portrait – a gift from Mr Miroslav Alexa
5.	View-cards related to the subject of puppeteering (6 cards) – a gift from Mr L.Štumpf
6.	The scene from the staging of The Prince Maxmilian and Prince Belengardo, printed material and photographs from the performances – a gift from the Puppet Group Starost Prostějov
7.	Puppets and scene from the staging of The Magic Fish-Bone – a donation from the Naive Theatre (Naivní divadlo) in Liberec
8.	Puppets and scene from the staging of The Goldilocks – a donation from the Naive Theatre, Liberec
9.	Puppets and scene from the staging of Lazy Lars and Frog the Magician – a donation from the Naive Theatre, Liberec
10.	Puppets and scene from the staging of The Apple-Tree Maiden – a donation from the Naive Theatre, Liberec
11.	Documents from archives, photographs, DVD (10 articles altogether) – a gift from Olaf Bernstengel, Germany
12.	Heads of marionettes (5) – a gift from Věra Ďuriačová
13.	Five puppets made by František Štrajt + a M.Kopecký honourable mention, awarded to F.Štrajt by SAL SČDO – a gift from the author

Collections:

The archives and photo-archives have been continuously supplemented with press reports and photographs concerning plays staged by puppet theatres, festivals, exhibitions and the like. In addition, all the activities of the Museum have been continuously recorded.

Records of Collections and Care:

Total of newly acquired items for the year	198
Total of new inventory numbers for the year –	1 267
Discarded inventory articles	0

Total number of inventory articles as on Dec. 31	41 176
Number of inventory numbers recorded in the Sbírky (Collections) programme of the Bach Systems Olomouc (the Museum started computerising its records in 1997)	11 805
Total of revised inventory numbers of articles in the collections – V sub-collections	7 464
Percentage of revised inventory numbers of articles of the total collections	18.1%
Number of restored and conserved articles (puppets)	141
Number of repaired and cleaned articles (puppets)	35

II. Presentation of Collections

Displays and Exhibitions within the Museum

Permanent displays:

- Barrier-free (easy access) (a short history of Czech puppetry with specimens of puppets from other countries, displayed on the ground floor, intended for all visitors unable to mount the steep stairs)
- The traditional Czech puppet theatre
- The family puppet theatre
- Puppets from other countries from the Museum collections
- Luminescent theatre

On display in the entrance hall are specimens of restoration work together with a description of the initial condition, photographs and a description of the work done, and these are changed every other year. New display was made at the beginning of 2005 of a peasant (a marionette from the collections of the puppeteer Josef Kočka, the second half of the 19th century), repaired by an external assistant of the Museum, **Darina Kopečná**. The restoration work was reimbursed from gifts from visitors to the Museum.

Annual exhibitions:

- Lampion (the Lantern) is a theatre
- Posvícení v Hudlicích (A Village Fête in Hudlice)
- Clowns and Jesters of Prague Realm of Puppets

Short-term exhibitions in the Museum gallery:

- Until Jan. 16. The Family and me (children's exhibition)
- 20.1. – 6.3. Miroslav Alexa: Painting Related to Running
- 10.3. – 24.4. Eva Jasenská: Puppets – Fantasy Come Life
- 28.4. – 5.6. Zuzana Slovákova's Whims
- 9.6. – 4.9. Rudolf Zezula – A Painting Puppeteer
- 8.9. – 23.10. The World of Puppets in Picture Cards
- 27.10. – 11.12. Milan Ďuriš: Light Behind Light
- 15.12. – 22.1.2006 Nativity Scenes and Puppets of Bedřich Šilar

An exceptional exhibition to mark the celebrations of the 950th anniversary of the first written mention of Chrudim:

- May 5 to June 5, 2005 Actors – an exhibition of autographs of famous people, from Jaroslav Míchal's collections

Exhibitions Held at Other Places, Both at Home and Abroad

- exhibitions continuing from 2004:

- The Latvian Sate Puppet Theatre (Latvijas Valsts Lellu teātris), Riga, Latvia – *Čehu lellu teātris* - 5.11.2004 – 3.1.2005
- Museum of the Highlands, Jihlava – *Czech and Foreign Toys from Museum Collections* – 9.12.2004 – 9.1.2005
- Regional Museum, Náchod, exhibited in Hronov – *The Czech Puppet Theatre – its history and present day* – 3.12.2004 – 7.1.2005

- exhibitions installed in 2005:

- Regional Museum in Žatec – *The Czech Puppet Theatre – its history and present day* – 9.1. – 20.3.2005 – 1,877 visitors
- Regional Museum in Teplice - *The Czech Puppet Theatre – its history and present day* – 9.2. – 20.3.2005 – 2,053 visitors
- The “Hevosenkka“ Theatre, Helsinki, Finland - *The Czech Puppet Theatre – its history and present day* – 17.2. – 30.3.2005 – 3,500 visitors
- Museum of the Prostějov Region, Prostějov – *The Czech Family Puppet Theatre* - 2.3. – 26.6.2005 – 2,350 visitors
- Peruc - *The Czech Puppet Theatre – its history and present day* – 11.5. – 30.10.2005 – 3,290 visitors

- The Podblanicko Museum, Vlašim - *The Czech Puppet Theatre – its history and present day* – 2.6. – 31.8.2005 – 3,699 visitors
- House of Culture, Uherský Brod – *The Contemporary Czech Puppet Theatre* – 9.12.2005 – 6.1.2006 – 572 visitors
- Světlá nad Sázavou - *The Czech Puppet Theatre – its history and present day* – 12.12.2005 – 5.2.2006

Thus in 2005, three exhibitions were terminated and 8 new ones installed, one of these abroad.

Loans of Articles for Exhibitions:

For display in mobile and other Museum exhibitions, as well as for exhibitions arranged by other institutions, a total of 1,985 articles were loaned, 96 of them to other countries (Finland).

Museum Library

Number of volumes entered into the accession catalogue and catalogued in 2005	135
Total number of volumes as on 31.12.	17 387
Number of volumes entered into the Clavius programme by 31.12. (computerisation since late 2004)	2 010
Number of readers	48
Number of volumes lent out	250

Publication and Publicity

Already at the end of 2004 the Museum issued a folder on the exhibitions and displays held in the Mydlář House (seat of the Museum) in 2005. In addition, in the course of 2005 it issued the already traditional folders and posters announcing every short-term exhibition held in the gallery of the Museum. Then, in the autumn of 2005, a folder was published on exhibitions to be held in 2006, so that it could be used in time for publicity purposes. All the mentioned printed matter was prepared for printing by Stanislav Fremunt (Groš Agency, Prague).

III. Other Cultural Activities

"Please Touch!"

This is the name given to a room in the Museum containing puppets, opened in 1995, and it is where the tour of the Museum usually ends up. Here visitors – and not only juveniles – can work out for themselves how to manipulate puppets and hand puppets, and how to play theatre with them. In 2005, new hand puppets, made by Jiří Polehňa from Hradec Králové, were placed in the play-room.

Activity Groups for Making Puppets

- In the school term 2004/2005, three groups totalling 15 children met in the Museum once a week
- In the current school term, 2005/2006, there is one group of 4 children

Single Activities Arranged for the Public

- 21.3. – *Day of Puppets* – (to mark the World Day of Puppet Theatre) a performance given by children attending the puppet activity groups, making simple puppets – in all, 107 children and 42 adults participated
- 23.4. – making puppets – a workshop for 70 children
- 14.5. – *Museum Night* to mark the celebrations of the 950th anniversary of Chrudim – free entry to the Museum all day, varied programme from 7.30 p.m. to 01.00 a.m. (loutkové J.Polehňa's performance on *How the Mydlář Family Came to Chrudim and Built a House for Themselves*, a fair for children and grown-ups, a demonstration of carving puppets, gospels and spirituals, ghosts come to life,...) – more than 98 adults and 53 children participated, while in the evening, there were 952 grown-ups and 258 children
- 2.7. – a night visit to the Museum, chiefly for the participants of the Puppeteers' Chrudim Festival, but open to anybody who was interested
- 3.9. – European Heritage Days – to mark the Launching Day in Chrudim – free entry to the Museum including the chance to climb up the little tower of the Mydlář's House – 532 adults and 314 children came
- 10.9. – European Heritage Days – free entry to the Museum including the chance to climb up the little tower of the Mydlář's House, continuously repeated performance of J.Polehňa on *How the Mydlář Family Came to Chrudim and Built a House for Themselves* – 394 adults and 177 children participating

Activities organised by others in which the Museum participated

- 1.5. – *Majáles (Rag Day)* - a performance given by children attending the puppet activity groups, making pictures with children – 56 children took an active part
- 26.-27.5. – *Bambiriáda* (organised by civic association, Altus Chrudim) – a demonstration of puppets and how to make them, a performance of *The Gingerbread House and The Raven and the Fox*
- 1.6. – *Abra-Ka's Day* – (organised by the Basic School in Slatiňany) – a performance given by children attending the puppet activity groups – "*Little Mouse Kyška and Little Mouse Hryžka*" – 200 visitors; an offer for children to get a free ticket to the Museum – 40 children made use of the offer
- 5.10. – within the *Healthy Town* project – activities in the Regional Museum, making simple puppets with children – 120 children took part

Strolling of Puppets (to visit disabled children)

The project was prepared in the framework of the European Year of the Disabled in 2003 to bring the world of puppets to disabled children who are unable to visit the Museum or can do so with great difficulties. It is an on-going project, its programme is always adapted to the abilities of the children. Usually, a part of it was the making of simple puppets and masks, manipulation of puppets, talks about puppets, the puppet theatre and our Museum, a demonstration of puppets from our collections. A total of 12 establishments were visited (Daneta Hradec Králové, the Institute of Social Welfare in Slatiňany, Hamza's Clinic in Luže-Košumberk, The Svítání school in Pardubice, the day centre for disabled children, Jitřenka Chrudim, to name a few) and altogether the programmes were enjoyed by 144 children. In 2005, too, the project had the support of a grant from the Czech Ministry of Culture. As the project is well received and interest is growing, we expect to continue in 2006.

§ 1 d

Basic Personnel Data

1. Staff Members, division according to age and sex – as on December 31, 2005

Age	Men	Women	Total	%
up to 20	-	-	-	-
21 – 30	3	2	5	28
31 – 40	-	2	2	11
41 – 50	1	3	4	22
51 – 60	1	3	4	22
60 and plus	1	2	3	17
total	5	13	18	100.0%
%	28	72	100.0	x

2. Staff Members, division according to qualifications and sex – as on December 31, 2005

Level of education	Men	Women	Total	%
primary	-	-	-	-
skilled worker	2	1	3	17

specialised secondary	-	4	4	22
completed secondary	1	1	2	11
completed specialised secondary	2	3	5	28
higher specialised	-	-	-	-
university	-	4	4	22
total	5	13	18	100.0

3. An Overall Figure of Average Incomes

Average gross monthly pay:	17 189.- CZK
----------------------------	--------------

4. An Overall Figure of Employment Contracts in 2005

	Number
Starting	2
Leaving	2

5. Length of Employment Contracts – to December 31, 2005

Length of Contract	Number	%
Up to 5 years	9	50
Up to 10 years	3	18
Up to 15 years	1	5
Up to 20 years	3	17
Over 20 years	2	11
total	18	100.0

6. Command of Foreign Languages

There are no requirements at any position for passing a standard language test. Staff members are required to have a general oral and written command of another language.

§ 1 e

Review of Property Managed by the Museum

Property (amount)	12 705 329.82 CZK
- of which, value of buildings	8 379 967.60 CZK
Amount depreciated by 31.12.2005	4 032 805.72 CZK

Depreciation is even (Article 31 a) Act 586/92) based on the entry price of long-term tangible assets (Article 29, Act 586/92).

§ 1 f

Budget Details

	CZK
Contribution for running costs allocated for our organisation within the budget breakdown for 2005	5 790 000
Museum income	970 000
Expenditures	6 760 000
An increase in the contribution for running costs by the promoter through adjustments made in the budget to	6 803 000
- of which, specific-purpose contribution	269 000
- of which, for the Cultural Activities programme - Strolling of Puppets to visit disabled children	13 000
- of which, for the Cultural Activities programme – Promotion material for short-term exhibitions	40 000
- of which, ISO/D programme – expanding and furnishing a restoration workshop	13 000
- of which, ISO/D programme – purchasing articles of cultural value	203 000

An Overview of Expenditures and Gains

Item	Approved budget (thousand CZK)	Adjusted budget (thousand CZK)	Reality	%
Material consumption	420.00	441.00	460.00	104.00
Energy consumption	500.00	654.00	681.14	104.15
Goods sold	180.00	180.00	217.48	120.82

Repairs and maintenance	300.00	300.00	312.65	104.22
Travel expenses	80.00	81.00	53.22	65.70
Entertainment expenses	22.00	22.00	44.28	201.27
Other services	1 100.00	1 344.00	1 142.32	85.63
Payload	2 699.00	3 132.00	3 123.42	99.73
Statutory social security	945.00	1 096.00	1 072.61	97.87
Statutory social expenditures	53.00	62.00	61.89	99.82
Other taxes and charges	10.00	10.00	1.94	0.19
Interest rate	1.00	1.00	-	-
Other expenditures	150.00	150.00	134.11	89.41
Depreciation of long-term tangible assets	300.00	300.00	319.06	106.35
Total expenditures	6 760.00	7 773.00	7 624.52	

Revenue from sales of services	450.00	450.00	472.28	104.95
Revenue from sales of goods	250.00	250.00	251.62	100.65
Interest	-	-	0.08	-
Fund accounting	250.00	250.00	113.16	45.26
Other gains	20.00	20.00	0.40	0.02
Operation contributions and subsidies	5 790.00	6 803.00	6 803.00	100
Total revenues	6 760.00	-	7 640.54	

Profit	-	-	16.02	
---------------	----------	----------	--------------	--

Organisation assets and liabilities – on 31.12.2005

Assets		thousand CZK
Long-term low-value assets	(018)	7.25
Accumulated depreciation - Long-term low-value assets	(078)	- 7.25
Long-term tangible assets	(021,022,028)	12 705.33
Accumulated depreciation - Long-term tangible assets	(081,082,088)	- 4 032.81
Articles on stock	(132)	1 961.80

Advance on operating costs	(314)	104.46
Receivables from employees	(335)	76.50
Petty cash	(261)	4.89
Liquid valuables (stamps and vouchers)	(263)	0.09
Current account	(241)	374.80
FKSP (cultural and social needs fund) current account	(243)	85.98
Deferred expenses	(381)	29.92
Total assets		11 310.96

Liabilities		thousand CZK
Long-term assets fund	(901)	8 672.52
Fund of current assets	(902)	200.00
Remuneration fund	(911)	353.92
Cultural and social needs fund	(912)	195.91
Reserves	(914)	829.00
Investment fund (property reproduction)	(616)	641.20
Accounts payable (suppliers)	(321)	90.58
Other payables	(325)	0.07
Payroll payable (employees)	(331)	146.26
Payables for social security and health insurance	(336)	108.42
Other direct taxes	(342)	26.31
Estimated accrued expenses	(389)	30.75
Profit or loss for the period (profit)	(963)	16.02
Total liabilities		11 310.96

§ 1 g

Data evaluation and analysis

1. Rationale behind budget provisions

The limit number of the institute employees was fixed to 15 (converted) for 2005 and the level for drawing funds for the salaries and wages was set at 2 670 thousand Czech crowns and other personnel expenses (OPE) at 29 thousand CZK.

By means of budget adjustments Nos. 1, 2, 5 and 7, the funds for wages and salaries were increased to 3 102 thousand CZK and OPE to 30 thousand CZK.

Another binding indicator was the transfer of an amount of 1 200 thousand CZK to the national budget, which the institution anticipated to take in from the sales of some land it did not need. As no sale was made, these funds were not transferred.

2. National budget share in financing the institution

Planned running costs	6 760 000.- CZK
- of which, promoter's share	85.65%
Actual running costs	7 624 519.36 CZK
- of which, promoter's share	89.22%
Income (excluding promoter's contribution)	837 546.02 CZK
- of which, renting revenues	71 000.- CZK
Overall accounting of funds	113 163.50 CZK
- from reserve fund – donation from a sponsor, Holcim Prachovice	15 000.- CZK
- from the investment fund (used as an additional resource for purchasing long-term low-value assets)	98 163.50 CZK

3. Drawing on wage funds

Drawn wages and salaries amounted to	3 094 400.- CZK
- not fully used	7 600.- CZK
OPE – drawn	29 018.- CZK
- not fully used	982.- CZK

4. Research and development

There was no involvement in any scientific research programmes or projects financed from the national budget. Scientific research was only made within the scope of work of museum experts and did not require any special funds. The following tasks were followed:

- A Bachelor's theses, "*Collections in the Museum of Puppetry in Chrudim*" was completed (by Irena Makešová, a student of museology at the Silesian University in Opava).
- Work was started in researching and making a list of plays of strolling puppeteers, the texts of which are deposited in Czech museums. This work will continue in 2006.

- Work was also started on the comparison of Eduarda Vavruška's manuscript *Pages from a Chronicle* about the puppet theatre during World War Two (it could not be published in its full version under the previous regime) with a booklet published in 1989 under the name *Puppets behind Barbed Wire*. The task will be completed in a written form in 2006.
- Missing information and data on articles and collections were being continuously replenished.

5. Expenditures determined for investments (property reproduction)

Based on the third adjustment of the approved budget, special-purpose non-investment funds from ISO/D programme amounting to CZK 13,000.- we allocated for the financing of property reproduction in the institution to be used for the expansion and furnishing of a restoration shop and the eighth adjustment of the budget, the institution received special-purpose investment funds of CZK 83 000.- for security measures in buildings and for the transformation of existing radio system connected to a central security panel of the Czech police.

6. Membership in international organisations

- The Museum is a collective member of the Czech Centre of UNIMA, the international puppet organisation, and on top of this, Alena Exnarová an individual UNIMA member and worked in the in the board of the UNIMA Czech Centre. Membership in this organisation is helpful in making contacts and working with puppeteers, theatres and other specialised institutions in other countries, in obtaining information and articles for museum collections, in exchanging ideas and other puppet-related activities. The Museum does not pay any membership fees (this is done by the shelter Theatre Institute on behalf of the Czech Centre).
- The Museum is a collective member of the Czech Centre of SIBMAS, the international organisation of theatre libraries and museums. This is very useful for exchanging pieces of information. The Museum does not pay any membership fees

7. Business trips to other countries

There was only one business trip, to Finland, in connection with the installation of a mobile Museum exhibition in Helsinki. The cost of the trip were covered by the Finnish partner.

8. Transfer of funds into reserves

The economic result of 2004 was approved of and CZK 671 678.30 was transferred into the reserve fund. This amount was not used in 2005.

9. Economic Result (Loss and profit account)

In 2005, an amount of CZK 98 463.50 was used from the property reproduction fund as an additional resource for the purchase of long-term low-value assets. Thus the organisation made profit of CZK 16 026.66. It is proposed to transfer this profit into the reserves.

Data on recipients of services

Visitors to displays and exhibitions in the Museum

		<u>Number</u>	<u>Ca %</u>
Total number of visitors		23 649	100
- full admission		5 651	23.8
- reduced admission		13 097	55.3
	- of which, pensioners	2 408	10.1
	- number of children in groups	5 868	24.8
	- individual children and students	4 727	19.5
	- other reduced fees	96	0.4
Free-of-charge, total		4 901	20.7
	- of which, adults	2 698	11.4
	- of which, children under 6	2 203	9.3
Foreign visitors, total		601	2.5
Family admission (2 adults + 2 children) – introduced on 1.9.		30 families	

Number of visitors to mobile exhibitions installed elsewhere: 17,341

Number of visitors to all cultural and educational events : 3,982

Visitors for scientific research :

In all, 12 researchers visited the Museum or requested co-operation, of which 7 from other countries: Belgium, France, Italy, Spain, Switzerland, USA.

Conclusion

Thanks for articles donated into Museum collections :

- To Mr and Mrs Trčka
- To the puppet group Starost Prostějov

Thanks for financial and other assistance:

- The Ministry of Culture of the Czech Republic
- The HOLCIM (Česko), a.s. company

- The Town of Chrudim
- Stanislav Fremunt from Prague
- Jaroslav Koloděj from Senice u Poděbrad
- The Krátek u Sluníčka, Chrudim company
- The Fotoateliér Škop, Chrudim company
and all other colleagues and supporters

Thanks for a financial contribution for the restoration of puppets

- To the Museum visitors

Development in the number of visitors, 2001-2005

	2001	2002	2003	2004	2005
Shows and exhibitions	26 328	27 512	27 120	20 350	23 649
Of which children and young adults	14 317	14 443	16 199	12 304	12 798
Other cultural events	2 562	3 524	2 732	3 444	3 982

