

2006 Annual report

based on Government Decree No. 323/2005, which specifies the extent of annual report

§ 1a

Muzeum loutkářských kultur v Chrudimi

The Museum of Puppets in Chrudim

Břetislavova 74, 537 60 Chrudim
IČO (Organisation Identification No.) 00412830
Telephone +420 469 620 310
Telephone/fax +420 469 620 650
e-mail: puppets@cps.cz
<http://www.puppets.cz>

Opening time:

Permanent exhibition and short-term exhibitions:

IV – V, IX: Daily 9.00 to 12.00 a.m. and 1.00 to 5.00 p.m.

VI – VIII: Daily 9.00 to 12.00 a.m. and 1.00 to 6.00 p.m.

X – III: Monday – Friday 9.00 to 12.00 a.m. and 1.00 to 5.00 p.m., Saturday-Sunday
1.00 to 5.00 p.m.

(Last visitors are allowed to come in one hour before lunch break or one hour before the end of the opening time.)

Museum closed: 1.-14.1., Easter Monday, 24.-26.12. a 31.12.

Museum Library:

Tuesday and Thursday 9.00 a.m. to 2.00 p.m.

§ 1b

Mode of Establishment and Museum Promoter:

The Museum is an institution receiving contributions from the National Budget. It was established in 1972 by the East Bohemian Regional National Committee in Hradec Králové, which acted as its promoter until its own demise in December 31,1990. Since January 1, 1991, the Czech Ministry of Culture has been acting as the Museum promoter.

The Mission and History of the Museum:

The Museum of Puppeteer Cultures (Puppet Museum) acquires, gathers together, keeps, makes records of, professionally processes and displays for the general public, evidence of the development of the Puppet Theatre, both Czech and world-wide. It first opened on July 2, 1972. It is housed in a splendid Renaissance building (No. 74 – a first category cultural monument, registered under No. 758) erected by Matěj Mydlář, a citizen of

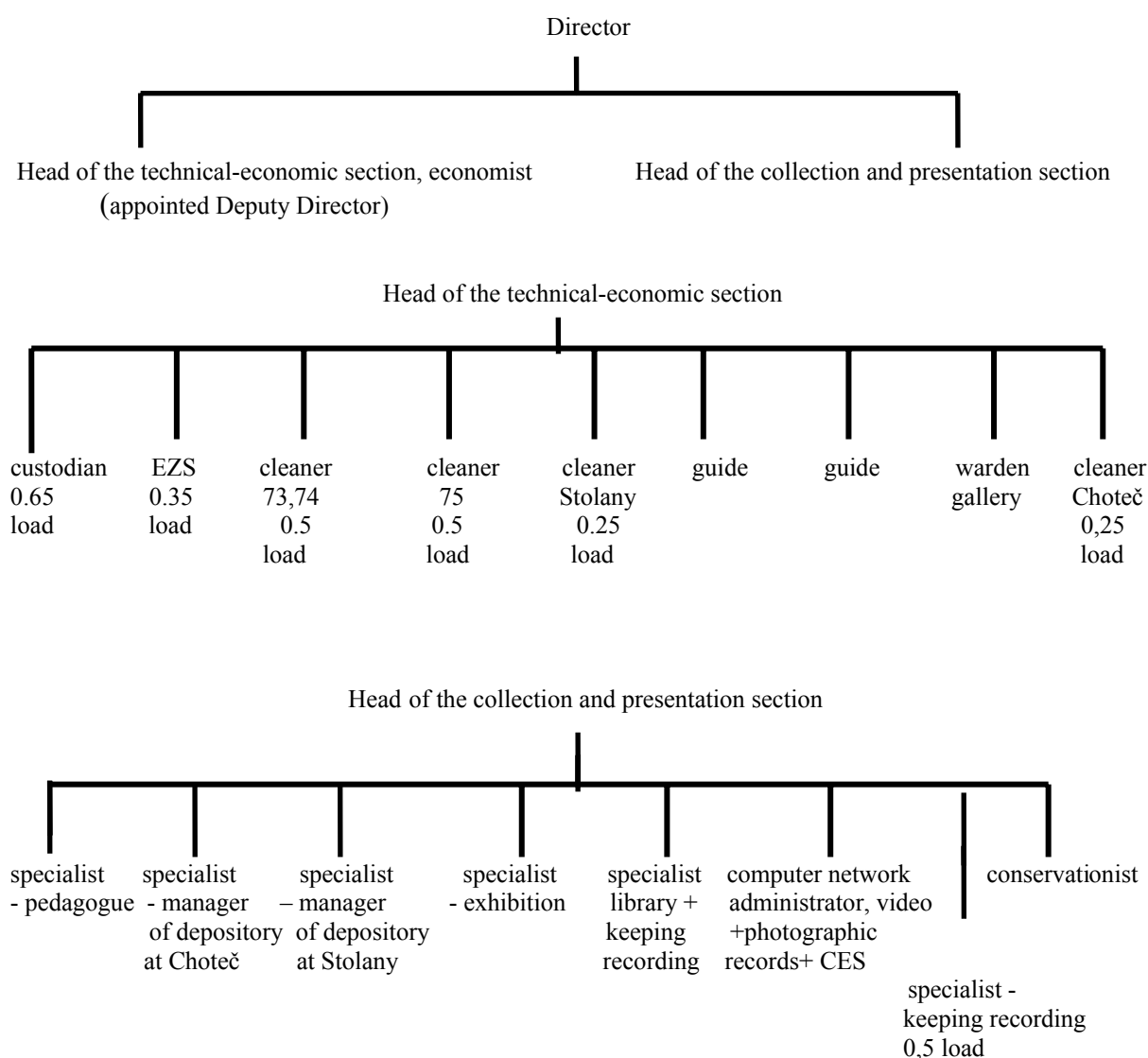
Chrudim, in 1573 – 1576. His son Daniel later added a small tower in the form of a minaret. The town authorities renovated the house in the sixties of the last century.

Now, the Museum has also spread its exhibits to a neighbouring house (No. 75 – a second category cultural monument, No. 4548).

The creation of the museum represented fulfilment of a long-cherished idea to establish a museum of puppets from all over the world which was first broached back in 1929 at the constituent congress of the International Puppet Organisation, UNIMA, held in Prague. The foundation stone of the museum's exhibits was the private collection of Dr. Jana Malík (1904 - 1980), who was the general secretary of UNIMA for many years, and gifts from the UNIMA national centres. The number of exhibits has been gradually expanded and supplemented.

§ 1 c

Organisational Structure:



Permanent staff of the Museum as on December 31, 2006

Exnarová Alena, Mgr.	Director, head of the collection and presentation section	alena.exnarova@puppets.cz , mobil 604 280 147
Holečková Alena	appointed Deputy Director, Head of the technical-economic section, economist	alena.holeckova@puppets.cz mobil 739 084 728
Sbírkový a prezentační úsek:		
Baboráková Jana	Conservationist	
Boušková Irena, Mgr.	Specialist - pedagogue	irena.bouskova@puppets.cz
Breberová Marcela, Mgr.	Specialist – manager of depository at Chotec	marcela.breberova@puppets.cz mobil 603 194 513
Líbal Tomáš	Computer network administrator, video and photographic records, CES	tomas.libal@puppets.cz
Licek Radomír	Specialist – manager of depository at Stolany	radek.licek@puppets.cz
Matysová Dagmar	Specialist – keeping recording	Tel. 469 620 310
Studnicková Hana, Ing.	Specialist – foreign puppetry + mobile exhibitions	hana.studnickova@puppets.cz mobil 604 857 445
Šulajová Hana	Specialist – library + keeping records	hana.sulajova@puppets.cz Tel. 469 620 310
Technickoekonomický úsek:		
Brunclík Václav	Stolany- cleaner + EZS	
Brunclíková Václava	Cleaner 73+74 + warden	
Geletová Libuše	guide	Tel. 469 620 310
Lédlová Jaroslava	Weekend guide	Tel. 469 620 310
Lohniská Jana	Chotec - cleaner + EZS	
Postupa Ladislav	Custodian + EZS	Mobil 739 039 647
Skopalíková Emílie	Warden in the gallery	
Šídlo Pavel	Warden in the gallery	

Consultative bodies

Collection Commission:

PhDr. Jaroslav Blecha, head of the theatre section of the Moravian Provincial Museum in Brno

Mgr. Marcela Breberova, specialist, Puppet Museum in Chrudim

Ing. Milena Burdychova, Director of the District Museum in Chrudim

Jarmil Chladek, former Director of the Puppet Museum in Chrudim

Mgr. Jindriska Patkova, specialist in the theatre section of the National Museum in Prague – to November 22, 2006 (she died)

PhDr. Zdenek Zahradnik, Director of the East Bohemian Museum in Hradec Kralove

The Collections Commission met on November 2, 2006.

Specialised Council of the Museum:

The Specialised Council of the Museum was nominated for three years dating from October 1, 2004, composed as follows:

Stanislav Doubrava, Director of the Naive Theatre in Liberec

Roman Kosek, Director of the Municipal Museum and Gallery in Litomysl

Nina Malikova, editor-in-chief of the Puppet magazine and lecturer at DAMU (Academy of Dramatic Arts), Prague

Iva Malinova, Head of Nursery School, Sv.Cech Street in Chrudim

Nada Pemlova, Head of the Cultural Department, Regional Administration, Pardubice Region (chairperson)

Ivan Slejska, Head of the Cultural Department, Town Council, Chrudim

Alois Tomanek, puppet stage designer and teacher

- representing the Puppet Museum in Chrudim:

Alena Exnarova, Museum Director

Alena Holeckova, head of the technical-economic section and appointed Deputy Director

The Specialised Council of the Museum met on April 24, 2006 . It mainly commented on the annual report for 2005, the plan of work for 2006 and the chief tasks of the Museum in 2007.

Anoutline of principal activities of organisation

I. Collection of and Care for Specimens

Purchases:

	article	CZK
1.	Puppet theatre created by Dr. Jiří Lorman between 1920 and 1940, built into the attic of a villa at Ořechovka in Prague (Supplementary payment for purchases made in 2005)	45 000,-
2.	A family puppet theatre set called “SALPRA, Czechoslovak product“ & 13 puppets, 20 cm tall	22 000,-
3.	Photographs documenting the 55 th Puppeteers’ Chrudim Festival of national amateur puppet theatre (84 black-and-white photographs, 212 x 150 mm, & 2 CDs containing coloured photographs)	7 300,-
4.	Photographs documenting other events and articles	4 683,50
5.	Picture postcards showing Lucie and Tomáš Suchý’ s works	80,-
6.	Press cutting services	65 894,-
Celkem		144 957,50

Donations:

1.	Puppets, scene and stage components for the staging of <i>From a Book of Fairytales, 2001</i> , by the Lampion (Lantern) Theatre in Kladno – a donation from the theatre
2.	Puppets for the staging of <i>The Goldilocks, 1991</i> , by Lampion Theatre in Kladno – a donation from the theatre
3.	Puppets and part of the scene for the staging of <i>The Nightingale, 1998</i> by the Lampion Theatre in Kladno – a donation from the theatre
4.	Puppets and part of the scene for the staging of <i>The Creation of the Sun, 2001</i> , by the Lampion Theatre in Kladno – a donation from the theatre
5.	Puppets and stage components for the staging of <i>The Gingerbread House, 2001</i> , by the Lampion Theatre in Kladno – a donation from the theatre
6.	Puppets and stage components for the staging of <i>The Story of Leontýna, a Circus-Rider, and Clown Dodo, 1997</i> , by the Lampion Theatre in Kladno – a donation from the theatre
7.	Puppets and a stage component for the staging of <i>Káča and the Devil, 1992</i> , – by the Lampion Theatre in Kladno – a donation from the theatre
8.	Puppets & a complete theatre with scenery and stage props for the staging of <i>We'll Get Going Tomorrow, 2000</i> , by the Lampion Theatre in Kladno – a donation from the theatre
9.	A scale-model scene for the staging of <i>The Tragic History of Doctor Faust, 1996</i> , by the Lampion Theatre in Kladno – a donation from stage designer Alois Tománek
10.	A scale-model scene for the staging of <i>Brunclík, Prince of Bohemia, 1994</i> , by the Lampion Theatre in Kladno – a donation from stage designer Alois Tománek
11.	A scale-model scene for the staging of <i>Mrs Poverty, 1973</i> , by the Lampion Theatre in Kladno – a donation from stage designer Alois Tománek
12.	A scale-model scene for the staging of <i>A Fairytale from the Tea-Urn, 1977</i> , by the Lampion Theatre in Kladno, staged by Zdeněk Bauer – a donation from Alois Tománek
13.	A scale-model scene for the staging of <i>Hurvínek in the Wild West, 1991</i> , by the Theatre of Spejbl and Hurvínek, Praha – a gift from stage designer Alois Tománek
14.	A scale-model scene for the staging of <i>Hurvínek and One Bear Too Many, 1991</i> , by the Theatre of Spejbl and Hurvínek, Praha – a gift from stage designer Alois Tománek
15.	A scale-model scene for the staging of <i>Spejbl's East Side Story, 1993</i> , by the Theatre of Spejbl and Hurvínek, Praha – a gift from stage designer Alois Tománek
16.	A scale-model scene for the staging of <i>King Venceslas, 1993</i> , by the Minor Theatre, Praha – a gift from stage designer Alois Tománek
17.	Puppets, scenery and stage props from the staging of <i>We are Fabulously Lucky</i> by Naivní divadlo (Naive Theatre) Liberec – a donation from the theatre
18.	Puppets and scenery from the staging of <i>Save Private Kuřátko (2000)</i> by the puppeteer group Tatrmani SPŠK Bechyně - a gift from its author Josef Brůček
19.	Puppets and scenery from the staging of <i>Wind from the Appalachian Mountains, (2003)</i> by the puppeteer group Druhák, Hradec Králové – a gift from the author, Jiří Polehňa
20.	A set of puppets (12 off & a head), said to have been carved in the 1980's by Augustin Klášterka from Nové Mitrovice for the Maternity School in Sluneční street, Pardubice – a gift from Marie Reinsteinová
21.	Materials for the library and archives (puppeteer booklets and magazines, press cuttings, programmes, and the like) – a gift from Anton Duša from Banská Bystrica

22.	Stage design for the staging of <i>The Story??? of Man</i> (1996) by the theatre Buchty a loutky (Buns and Puppets), Praha - a gift from the theatre
23.	Stage design for the staging of <i>Gilgameš</i> (2001) by the theatre Buchty a loutky (Buns and Puppets), Praha - a gift from the theatre
24.	Puppets and scenery for the staging of <i>Bright Finist the Falcon</i> (2001) by the puppet theatre Střípek Plzeň – a donation from the theatre
25.	2 CDs of songs from the productions of groups “C“ and “Tlupatlapa“ from Svitavy – a gift from the Centre of Cultural Services, Svitavy
26.	Booklets and printed material concerning the Slovak puppet theatre and the work of the Múzeum bábkárskych kultúr a hračiek Modrý Kameň (Museum of Puppetry and Toys) – a gift from the museum
27.	Scenery for family theatre and puppeteer booklets – a gift from Academic sculptor František Korejs
28.	Photographs and printed material from productions of several Czech and Slovak puppet theatres
29.	An enlargement of a photograph of an engraving depicting Mydlář's House, taken from Břetislavova street, by K.Liebacher – a gift from Jiří Zavřel

Collections:

The archives and photo-archives have been continuously supplemented with press reports and photographs concerning plays staged by puppet theatres, festivals, exhibitions and the like. In addition, all the activities of the Museum have been continuously recorded.

Records of Collections and Care:

Total of newly acquired items for the year	464
Total of new inventory numbers for the year –	1,512
Discarded inventory articles	10
Total number of inventory articles as on Dec. 31	42,707
Number of inventory numbers recorded in the Sbírky (Collections) programme of the Bach Systems Olomouc (the Museum started computerising its records in 1997)	11,805
Total of revised inventory numbers of articles in the collections – V sub-collections	2,137
Percentage of revised inventory numbers of articles of the total collections	5%
Number of restored and conserved articles (puppets)	63
Number of repaired and cleaned articles (puppets)	130

II. Presentation of Collections

Displays and Exhibitions within the Museum

Permanent displays:

- Barrier-free (easy access) (a short history of Czech puppetry with specimens of puppets from other countries, displayed on the ground floor, intended for all visitors unable to mount the steep stairs)
- The traditional Czech puppet theatre
- The family puppet theatre
- Puppets from other countries from the Museum collections
- Luminescent theatre

On display in the entrance hall are specimens of restoration work together with a description of the initial condition, photographs and a description of the work done, and these are changed every other year. New display was made at the beginning of 2005 of a peasant (a marionette from the collections of the puppeteer Josef Kočka, the second half of the 19th century), repaired by an external assistant of the Museum, **Darina Kopečná**. The restoration work was reimbursed from gifts from visitors to the Museum.

Annual exhibitions:

- Amateurs Participating in “Puppeteer Chrudim” after the Velvet Revolution
- Karel Vostárek – a Portrait of the Artist
- Puppets in Jan Hlína’s Graphic Art

Short-term exhibitions in the Museum gallery:

- Until Jan. 22. Nativity Scenes and Puppets of Bedřich Šilar
- 2.2. – 2.4. Gabriel Filčík’s Painted World
- 13.4. – 4.6. Alois Sikora – Following the Course of Fantasy
- 15.6. – 3.9. The Enchanting World of the 19th Century Children’s Theatre (paper theatre from the collections of Karel Zelenka)
- 14.9. – 5.11. Eyes, Windows, Little Windows. An exhibition of naive paintings and puppets by Lucie Suchá and Tomáš Suchý
- 16.11. – 30.12. Each of Us Can Do Something

Exhibitions Held at Other Places, Both at Home and Abroad

- exhibition continuing from 2005:

- Světlá nad Sázavou - *The Czech Puppet Theatre – its history and present day* – 12.12.2005 – 5.2.2006 - 1,100 visitors

- **exhibitions installed in 2006:**

- Local History Museum in Zábřeh – *The Contemporary Czech Puppet Theatre* - 15.2. – 8.4.2006 – 1,619 visitors
- Municipal Museum and Gallery in Svitavy – *The Czech Family Puppet Theatre* – 18.2. – 16.4.2006 – 2,722 visitors
- The Library in Rájec-Jestřebí – *Puppets of Jaroslav Koloděj* – 31.3. – 28.6.2006 – 1,176 visitors
- History Museum in Slavkov u Brna - *The Czech Puppet Theatre – its history and present day* – 4.4. – 28.5.2006 – 913 visitors
- Štátná galéria Banská Bystrica (State Gallery), Slovak Republic – *Two Centuries with Czech Puppets* (to mark the international puppet festival, Bábkárská Bystrica) – September 7 to October 8 – 800 paying visitors & about 500 participants having free entry to the festival
- Local Cultural Centre in Náměšť nad Oslavou - *Czech and Foreign Toys from Museum Collections* – 1.11. – 26.11.2006 – 450 visitors
- The Library in Tvrdonice - *The Czech Puppet Theatre – its history and present day* – 4.11. – 3.12.2006 – 500 visitors
- The Castle Šternberk - *The Czech Puppet Theatre – its history and present day* – 9.12.2006 – 4.3.2007 – to the end of 2006 2,000 visitors

Thus in 2006, one exhibition was terminated and 8 new ones installed, one of these abroad.

Loans of Articles for Exhibitions:

For display in mobile and other Museum exhibitions, as well as for exhibitions arranged by other institutions, a total of 2,472 articles were loaned, 449 of them to other countries (Finland). 30 articles loaned for other than exhibition purposes.

Museum Library

Number of volumes entered into the accession catalogue and catalogued in 2006	111
Total number of volumes as on 31.12.	17,498
Number of volumes entered into the Clavius programme by 31.12. (computerisation since late 2004)	4,069
Number of readers	34
Number of volumes lent out	222
Expenditures on books in CZK	11 621,-

Publication and Publicity

Already at the end of 2005 the Museum issued a folder on the exhibitions and displays held in the Mydlář House (seat of the Museum) in 2006. In addition, in the course of 2006 it issued the already traditional folders and posters announcing every short-term exhibition held in the gallery of the Museum. Then, in the autumn of 2006, a folder was published on exhibitions to be held in 2007, so that it could be used in time for publicity purposes. All the mentioned printed matter was prepared for printing by Stanislav Fremunt (Groš Agency, Prague).

III. Other Cultural Activities

"Please Touch!"

This is the name given to a room in the Museum containing puppets, opened in 1995, and it is where the tour of the Museum usually ends up. Here visitors – and not only juveniles – can work out for themselves how to manipulate puppets and hand puppets, and how to play theatre with them.

Activity Groups for Making Puppets

- In the school term 2005/2006, one group of 6 children met in the Museum once a week.
- In the current school term, 2006/2007, there is one group of 5 children.

Single Activities Arranged for the Public

- 21.3. – *Day of Puppets* – (to mark the World Day of Puppet Theatre) - free entry to Museum all day, making simple puppets – in all, 212 children and 47 adults participated
- A competition for children: *Paint an Elf* – on the occasion Alois Sikora's exhibition, April 13 to June 4 – the winner received an original picture by the author and several others got a diploma designed by him – in all 130 children took part
- 20.5. – *Chrudim Museum Night* (held in co-operation with the Regional Museum in Chrudim) allowing free entry to the Museum all day, varied programme from 7.00 p.m. to 01.00 a.m. (Jana Kyralová and Jirka Polehňa's puppet performances, Jirka Krejčík's magic and tricks, a demonstration of carving Jaroslav Koloděj's puppets, making simple puppets, climbing the museum tower, and more) – 191 adults and 60 children participated
- 1.7. – a night visit to the Museum, chiefly for the participants of the Puppeteers' Chrudim Festival, but open to anybody who was interested, free entry, climbing the tower; an exhibition installed on the occasion, *Panáčci (Figures)* - little lanterns made by Hanka Voříšková – 270 people participated
- 9.9. – *European Heritage Days* – free entry to the Museum including the chance to climb up the little tower of the Mydlář's House – 521 adults and 292 children participating

Activities organised by others in which the Museum participated

- 25.-26.5. – *Bambiriáda* (organised by civic association, Altus Chrudim) – a demonstration of puppets and how to make them – about 5000 children came to the stall; those who got a ticket for the event had a free entry to the Museum – 201 children made use of this opportunity
- 1.6. – *Abra-Ka's Day* – (organised by the Basic Arts School in Slatiňany) - an offer for children to get a free ticket to the Museum – 32 children made use of the offer.

Strolling of Puppets (to visit disabled children)

The project was prepared in the framework of the European Year of the Disabled in 2003 to bring the world of puppets to disabled children who are unable to visit the Museum or can do so with great difficulties. It is an on-going project, its programme is always adapted to the abilities of the children. Usually, a part of it was the making of simple puppets and masks, manipulation of puppets, talks about puppets, the puppet theatre and our Museum, a demonstration of puppets from our collections. A total of 10 establishments were visited and altogether the programmes were enjoyed by 86 children. In 2006, too, the project had the support of a grant from the Czech Ministry of Culture. As the project is well received and interest is growing, we expect to continue in 2007.

§ 1 d

Basic Personnel Data

1. Staff Members, division according to age and sex – as on December 31, 2006

Age	Men	Women	Total	%
up to 20	-	-	-	-
21 – 30	3	1	4	22,22
31 – 40	-	2	2	11
41 – 50	-	4	4	22,22
51 – 60	1	3	4	22,22
60 and plus	1	3	4	22,22
total	5	13	18	100.0%
%	28	72	100.0	x

2. Staff Members, division according to qualifications and sex – as on December 31, 2006

Level of education	Men	Women	Total	%
primary	-	-	-	-
skilled worker	2	1	3	17
specialised secondary	-	4	4	22
completed secondary	1	1	2	11
completed specialised secondary	2	3	5	28
higher specialised	-	-	-	-
university	-	4	4	22
total	5	13	18	100.0

3. An Overall Figure of Average Incomes

Average gross monthly pay:	18 339.- CZK
----------------------------	--------------

4. An Overall Figure of Employment Contracts in 2006

	Number
Starting	0
Leaving	0

5. Length of Employment Contracts – to December 31, 2006

Length of Contract	Number	%
Up to 5 years	7	39
Up to 10 years	4	22
Up to 15 years	2	11
Up to 20 years	3	17
Over 20 years	2	11
total	18	100.0

6. Command of Foreign Languages

There are no requirements at any position for passing a standard language test. Staff members are required to have a general oral and written command of another language.

§ 1 e

Review of Property Managed by the Museum

Property (amount)	13 180 437,42 CZK
- of which, value of buildings	8 216 065,60 CZK
Amount depreciated by 31.12.2006	4 478 188,52 CZK

Depreciation is even (Article 31 a) Act 586/92) based on the entry price of long-term tangible assets (Article 29, Act 586/92).

§ 1 f

Budget Details

	CZK
Contribution for running costs allocated for our organisation within the budget breakdown for 2005	6 510 000
Museum income	1 190 000
Expenditures	7 000 000
An increase in the contribution for running costs by the promoter through adjustments made in the budget to	6 880 000
- of which, specific-purpose contribution	
- the Cultural Activities programme - Strolling of Puppets to visit disabled children	30 000
- the Cultural Activities programme – an exhibition held in the framework of the International Festival Bábárská Bystrica	66 000
+ programme ISPROFIN – tackling the outcome of an energy audit – non-investment funds	113 000
+ programme ISO/D – furnishing the collection storage room with sliding frames for storing puppets – investment funds	200 000

An Overview of Expenditures and Gains

Item	Approved budget (thousand CZK)	Adjusted budget (thousand CZK)	Reality	%
Material consumption	455.00	542.00	536.93	99,06
Energy consumption	689.00	708.00	614.69	86,82
Goods sold	200.000	200.00	223.96	111,98
Repairs and maintenance	355.00	355.00	488.70	137,66
Travel expenses	75.00	96.00	57.84	60,25
Entertainment expenses	25.00	25.00	12.54	50,16
Other services	1 148.00	1 193.00	987.92	82,81
Payload	3 112.00	3 334.00	3 332.00	99,97
Statutory social security	1 089.00	1 149.00	1 155.26	100,54
Statutory social expenditures	62.00	65.00	66.01	101,55
Other taxes and charges	10.00	10.00	1.09	10,90
Losses due to the fluctuation of exchange rates	-	-	0.05	-
Other expenditures	150.00	176.00	131.38	74,65
Depreciation of long-term tangible assets	330.00	330.00	327.41	99,22
Total expenditures	7 700.00	8 183.00	7 936.72	96,99

Revenue from sales of services	470.00	470.00	419.00	89,36
Revenue from sales of goods	250.00	250.00	232.37	92,95
Interest	-	-	0.13	-
Fund accounting	450.00	450.00	291.24	64,72
Other gains	20.00	20.00	-	-
Operation contributions and subsidies	6 510.00	6 993.00	6 993.00	100,00
Total revenues	7 700.00	8 183.00	7 936.72	96,99

Profit	0	0	0	0
---------------	----------	----------	----------	----------

Organisation assets and liabilities – on 31.12.2006

Assets		thousand CZK
Long-term low-value assets	(018)	103.64
Other long-term intangible property	(019)	190.40
Accumulated depreciation - Long-term low-value assets	(078)	- 103.64
Long-term tangible assets	(031,021,022, 028)	12 886.41
Accumulated depreciation - Long-term tangible assets	(081,082,088)	- 4 374.56
Articles on stock	(132)	1 751.97
Clients	(311)	45.12
Advance on operating costs	(314)	401.07
Receivables from employees	(335)	119.49
Petty cash	(261)	4.75
Liquid valuables (stamps and vouchers)	(263)	0.08
Current account	(241)	560.53
FKSP (cultural and social needs fund) current account	(243)	104.80
Deferred expenses	(381)	35.08
Total assets		11 725.14

Liabilities		thousand CZK
Long-term assets fund	(901)	8 702.25
Fund of current assets	(902)	200.00
Remuneration fund	(911)	353.92
Cultural and social needs fund	(912)	243.18
Reserves	(914)	804.16
Investment fund (property reproduction)	(616)	601.40
Accounts payable (suppliers)	(321)	148.91
Other payables	(325)	0.07
Payroll payable (employees)	(331)	147.13
Payables for social security and health insurance	(336)	197.07
Other direct taxes	(342)	54.46
Estimated accrued expenses	(389)	272.59

Profit or loss for the period (profit)	(963)	0
Total liabilities		11 725.14

§ 1 g

Data evaluation and analysis

1. Rationale behind budget provisions

The limit number of the institute employees was fixed to 15 (converted) for 2005 and the level for drawing funds for the salaries and wages was set at 3 082 thousand Czech crowns and other personnel expenses (OPE) at 29 thousand CZK.

By means of budget adjustments Nos. 1, 2, 6 and 8, the funds for wages and salaries were increased to 3 304 thousand CZK.

Another binding indicator was the transfer of an amount of 1 200 thousand CZK to the national budget, which the institution anticipated to take in from the sales of some land it did not need. As no sale was made, these funds were not transferred.

2. National budget share in financing the institution

	CZK
Planned running costs	7 700 000.00
- of which, promoter's share	6 510 000.00
Actual running costs	7 936 722.82
- of which, promoter's share	6 993 000.00
Income (excluding promoter's contribution)	943 722.82
- of which, renting revenues	126 450.00
Overall accounting of funds	291 236.48
- from reserve fund – donation from a sponsor, Holcim Prachovice	20 000.00
- Covering the organisation's unsecured requirements	40 873.78
- from the investment fund (used as an additional resource for purchasing long-term low-value assets)	230 362.70

3. Drawing on wage funds

	CZK
Drawn wages and salaries amounted to	3 330 665
- not fully used	3 335
OPE – drawn	32 273
- labour fringe benefits overdrawn	2 273

4. Research and development

There was no involvement in any scientific research programmes or projects financed from the national budget. Scientific research was only made within the scope of work of museum experts and did not require any special funds. The following tasks were followed:

- Work continued in researching and making a list of plays of strolling puppeteers, the texts of which are deposited in Czech museums. This project started in 2005 and will be completed in 2007.
- The transfer of collections in 2005 and the change in keeping records of the articles was accompanied by continuous replenishing of missing information and data.

5. Expenditures determined for investments (property reproduction)

	CZK
Investment grants from the ISO/D programme – purchasing sliding frames for storing puppets	200 000
From own funds – a functional volume study for the Museum reconstruction	136 850

6. Membership in international organisations

- The Museum is a collective member of the Czech Centre of UNIMA, the international puppet organisation, and on top of this, Alena Exnarová an individual UNIMA member and worked in the in the board of the UNIMA Czech Centre. Membership in this organisation is helpful in making contacts and working with puppeteers, theatres and other specialised institutions in other countries, in obtaining information and articles for museum collections, in exchanging ideas and other puppet-related activities. The Museum does not pay any membership fees (this is done by the shelter Theatre Institute on behalf of the Czech Centre).
- The Museum is a collective member of the Czech Centre of SIBMAS, the international organisation of theatre libraries and museums. This is very useful for exchanging pieces of information. The Museum does not pay any membership fees

7. Business trips to other countries

There were only two business trips abroad, to Slovakia. Five members of the Museum staff installed an exhibition in Banská Bystrica from September 4 to 7, on the occasion of the international puppet festival, Bábkárská Bystrica, and then 4 people went to dismantle it from October 8 to 10. The costs of the exhibition and the trips were partly covered by the Czech Ministry of Culture (a grant from the Cultural Activities programme amounting to CZK 66 000) and by the Bohemian Centre in Bratislava. Beside this, A.Exnarová took part in the festival (held from September 8 to 12) as a guest of honour and the costs were covered by the organiser.

8. Economic Result and the Transfer of Funds into the Reserve Fund

The economic result of 2006 amounted to zero and no funds were transferred into the reserve fund.

§ 1h

Data on recipients of services

Visitors to displays and exhibitions in the Museum

		<u>Number</u>	<u>Ca %</u>
Total number of visitors		18 607	100
- full admission		5,244	28,2
- reduced admission		7,020	37,7
	- of which, pensioners	1,086	5,8
	- number of children in groups	3,338	18,0
	- individual children and students	3,215	17,3
	- other reduced fees	54	0,3
Free-of-charge, total		4,722	25,4
	- of which, adults	1,073	5,8
	- of which, children under 6	3,429	18,4
Foreign visitors, total		608	3,3
Family admission (2 adults + 2 children) –		225 families (900 persons)	4,8
Additional charge allowing entry to the tower (possible for groups only)		112	0,6

Number of visitors to mobile exhibitions installed elsewhere: 10,700

Number of visitors to all cultural and educational events : 7,025

Visitors for scientific research :

In all, 15 researchers visited the Museum or requested co-operation, of which 7 from other countries: Israel, Japan, Slovakia, Switzerland and USA.

Conclusion

Thanks for articles donated into Museum collections :

- To Mr Josef Brůček
- To Mr Anton Duša
- To Mr František Korejs

- To Mr Jiří Polehňa
- To Mrs Marie Reinsteinová
- To Mr Alois Tománek
- To Mr Jiří Zavřel
- To Divadlo Buchty a loutky Praha (Prague Buns and Puppets Theatre)
- To Lampion (Lantern) Theatre in Kladno
- To the puppet group Střípek Plzeň
- To Múzeum bábkárských kultúr a hračiek Modrý Kameň (Museum of Puppetry and Toys in Modrý Kameň)
- To Naivní divadlo (Naive Theatre) Liberec
- Centre of Cultural Services in Svitavy

Thanks for financial and other assistance:

- The Ministry of Culture of the Czech Republic
- The HOLCIM (Česko), a.s. company
- The Town of Chrudim
- Stanislav Fremunt from Prague
- Jaroslav Koloděj from Senice u Poděbrad
and all other colleagues and supporters

Thanks for a financial contribution for the restoration of puppets

- To the Museum visitors (2 137 CZK)

Development in the number of visitors, 2002-2006

	2002	2003	2004	2005	2006
Shows and exhibitions	27 512	27 120	20 350	23 649	18 607
Of which children and young adults	14 443	16 199	12 304	12 798	10 482
Other cultural events	3 524	2 732	3 444	3 982	7 025

Text of the Annual Report : Alena Exnarová, Alena Holečková
April 2007