

2007 Annual report

based on Government Decree No. 323/2005, which specifies the extent of annual report

§ 1a

Muzeum loutkářských kultur v Chrudimi

The Museum of Puppets in Chrudim

Břetislavova 74, 537 60 Chrudim

IČO (Organisation Identification No.) 00412830

Telephone +420 469 620 310

Telephone/fax +420 469 620 650

e-mail: puppets@cps.cz

<http://www.puppets.cz>

Opening time:

Permanent exhibition and short-term exhibitions:

IV – V, IX: Daily 9.00 to 12.00 a.m. and 1.00 to 5.00 p.m.

VI – VIII: Daily 9.00 to 12.00 a.m. and 1.00 to 6.00 p.m.

X – III: Tuesday – Friday 9.00 to 12.00 a.m. and 1.00 to 5.00 p.m., Saturday-Sunday 1.00 to 5.00 p.m.

(Last visitors are allowed to come in one hour before lunch break or one hour before the end of the opening time.)

Museum closed: 1.-14.1., Easter Monday, 24.-26.12. a 31.12.

Museum Library:

Tuesday and Thursday 9.00 a.m. to 2.00 p.m.

§ 1b

Mode of Establishment and Museum Promoter:

The Museum is an institution receiving contributions from the National Budget. It was established in 1972 by the East Bohemian Regional National Committee in Hradec Králové, which acted as its promoter until its own demise in December 31,1990. Since January 1, 1991, the Czech Ministry of Culture has been acting as the Museum promoter.

The Mission and History of the Museum:

The Museum of Puppeteer Cultures (Puppet Museum) acquires, gathers together, keeps, makes records of, professionally processes and displays for the general public, evidence of the development of the Puppet Theatre, both Czech and world-wide. It first opened on July 2, 1972. It is housed in a splendid Renaissance building (No. 74 – a first category cultural monument, registered under No. 758) erected by Matěj Mydlář, a citizen of

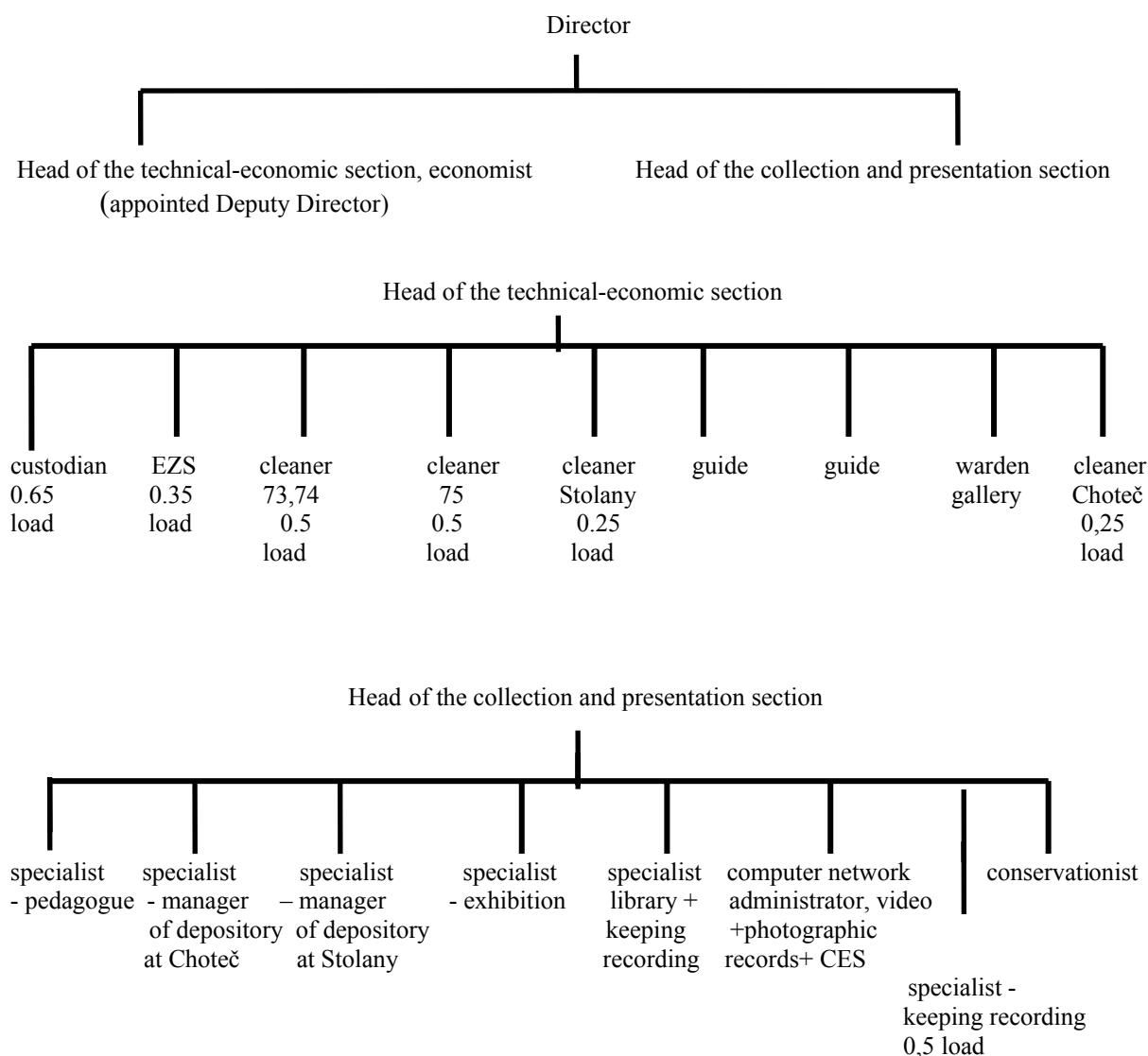
Chrudim, in 1573 – 1576. His son Daniel later added a small tower in the form of a minaret. The town authorities renovated the house in the sixties of the last century.

Now, the Museum has also spread its exhibits to a neighbouring house (No. 75 – a second category cultural monument, No. 4548).

The creation of the museum represented fulfilment of a long-cherished idea to establish a museum of puppets from all over the world which was first broached back in 1929 at the constituent congress of the International Puppet Organisation, UNIMA, held in Prague. The foundation stone of the museum's exhibits was the private collection of Dr. Jana Malík (1904 - 1980), who was the general secretary of UNIMA for many years, and gifts from the UNIMA national centres. The number of exhibits has been gradually expanded and supplemented.

§ 1 c

Organisational Structure:



Permanent staff of the Museum as on December 31, 2007

Exnarova Alena, Mgr.	Director, head of the collection and presentation section	alena.exnarova@puppets.cz , mobil 604 280 147
Holeckova Alena	appointed Deputy Director, Head of the technical-economic section, economist	alena.holeckova@puppets.cz mobil 739 084 728
Department of Collections and Presentations :		
Baborakova Jana	Conservationist	
Bouskova Irena, Mgr.	Specialist - pedagogue	irena.bouskova@puppets.cz
Libal Tomas – till March 31, 2007	Computer network administrator, video and photographic records, CES	tomas.libal@puppets.cz
Libalova (Breberova) Marcela, Mgr.	Specialist – manager of depository at Chotec	marcela.breberova@puppets.cz mobil 603 194 513
Licek Radomir	Specialist – manager of depository at Stolany	radek.licek@puppets.cz
Matysova Dagmar	Specialist – keeping recording	Tel. 469 620 310
Mensatoris Ales, Ing. – since March 26, 2007	Computer network administrator, video and photographic records, CES	ales.mensatoris@puppets.cz
Studnickova Hana, Ing.	Specialist – foreign puppetry + mobile exhibitions	hana.studnickova@puppets.cz mobil 604 857 445
Sulajova Hana	Specialist – library + keeping records	hana.sulajova@puppets.cz Tel. 469 620 310
Technical and Economic Department:		
Brunclik Vaclav – till June 30, 2007	Stolany - cleaner + EZS	
Brunclikova Vaclava – till June 30, 2007	Cleaner 73+74 + warden	
Brunclikova Vaclava – since Juli 1, 2007	Stolany - cleaner + EZS	
Geletova Libuse	guide	Tel. 469 620 310
Kubelkova Hana – since Juli 2, 2007	Cleaner Chrudim (73+74+75)	Tel. 603 832 356
Ledlova Jaroslava	Weekend guide	Tel. 469 620 310
Lohniska Jana	Chotec - cleaner + EZS	
Postupa Ladislav	Custodian + EZS	Mobil 739 039 647
Skopalikova Emilie	Warden in the gallery	
Sidlo Pavel	Warden in the gallery	

Consultative bodies

Collection Commission:

PhDr. Jaroslav Blecha, head of the theatre section of the Moravian Provincial Museum in Brno

Mgr. Marcela Libalova, specialist, Puppet Museum in Chrudim

Ing. Milena Burdychova, Director of the District Museum in Chrudim

Jarmil Chladek, former Director of the Puppet Museum in Chrudim

PhDr. Zdenek Zahradnik, Director of the East Bohemian Museum in Hradec Kralove

The Collections Commission met on March 3, 2007.

Specialised Council of the Museum:

The Specialised Council of the Museum was nominated for three years dating from October 1, 2004, composed as follows:

Stanislav Doubrava, Director of the Naive Theatre in Liberec

Roman Kosek, Director of the Municipal Museum and Gallery in Litomyšl

Nina Malikova, editor-in-chief of the Puppet magazine and lecturer at DAMU (Academy of Dramatic Arts), Prague

Iva Malinova, Head of Nursery School, Sv.Cech Street in Chrudim

Nada Pemlova, Head of the Cultural Department, Regional Administration, Pardubice Region (chairperson)

Ivan Slejska, Head of the Cultural Department, Town Council, Chrudim

Alois Tomanek, puppet stage designer and teacher

- representing the Puppet Museum in Chrudim:

Alena Exnarova, Museum Director

Alena Holeckova, head of the technical-economic section and appointed Deputy Director

The Specialised Council of the Museum met on April 27, 2007 . It mainly commented on the annual report for 2006, the plan of work for 2007 and the chief tasks of the Museum in 2008.

Anoutline of principal activities of organisation

I. Collection of and Care for Specimens

Purchases:

	article	CZK
1.	Jaroslav Šváb's Home puppet theatre with scene decorations without stiffening, furniture and accessories + 8 puppets + 4 heads	13 500.-
2.	Two marionettes – Duke and Rigoletto, made for the Spejbl and Hurvínek Theatre in Prague by Jan Vavřík-Rýz	36 000.-
3.	Aleš Home Puppet Theatre and Kysela's forestage, seven complete scene decorations + accessories, well preserved	20 000.-

4.	A home-made family puppet theatre with hand-painted forestage, about 1950's	1 000.-
5.	Photographic documentation of the 56 th Puppeteer Chrudim National Festival of Amateur Puppet Theatre (2007) - 91 black-and-white photographs, 212x150 mm + CD carrying the photos in digital form	7 300.-
6.	DVD documenting selected performances and a cross-section of workshops held during the 55 th Puppeteer Chrudim National Festival of Amateur Puppet Theatre (2006)	1 000.-
7.	CD – <i>There Will be Something There</i> , Naivní divadlo (Naïve Theatre) Liberec	130.-
8.	DVD version of the staging of the <i>Baroque Opera</i> , The Forman Brothers' Theatre	149.-
9.	CD – songs from the staging of <i>The Three Musketeers</i> , the Alfa Theatre, Plzeň	215.-
10.	CD – <i>Two – Captain</i> , music composed by Mr and Mrs Kratochvíl, to accompany performances staged, inter alia, by the DNO Theatre, Hradec Králové	199.-
11.	DVD of <i>Chcípáci</i> , Buchty a loutky Theatre, Prague	180.-
12.	A set of 5 CDs performances of Spejbl and Hurvínek by Josef Skupa	465.-
13.	Press cutting services	60 863.15
Celkem		141 001.15

Donations:

1.	Mass produced scenes, spare parts for puppets, printed puppet plays – a gift from Jiří Vodička
2.	Puppets from the staging of <i>Bystrouška, liška (the Cunning Little Vixen)</i> (1999), puppet group C Svitavy – donated by the group
3.	An original document issued by the Regional Office in Chrudim in 1935 for the Ladies' Department of the Central Educational Foundation – a licence to hold theatre and puppet performances in the municipal theatre in Chrudim + copies of other documents – a gift from Karel Mareš
4.	Puppets from the staging of <i>The Shepherdess</i> (2003), the puppet group called Tlupatlapa, the Little School of Drama, Svitavy – a gift from the group
5.	Puppets and scenes from the staging of <i>The Elephant</i> (2002), the puppet group called C Svitavy – a gift from stage designer Jindřich Pevný
6.	Comics by Jiří Jelínek from the DNO Theatre, Hradec Králové – <i>The Story of Two Siblings Who Ran and Found Themselves Elsewhere....</i> (2006) – a gift from the author
7.	A collection of posters and programmes of performances, photographs, DVDs of the staging of <i>Johannes, Doctor Faustus</i> , the Realm of Puppets, Prague – a gift from the ensemble
8.	A home-made family puppet theatre + 30 puppets (commercial bodies and home-made costumes), ca the 1950s – donated by Daniela Stejskalová
9.	A puppet of Goldilocks from the staging of <i>Goldilocks</i> , by the puppet group called C Svitavy – a gift from the group

10.	A puppet of Honza (Johnnie) for a family theatre (16 cm tall, mass produced by JE-KA), the 1930s – a gift from Karel Zatřepálek
11.	Puppet of a dragon from the former theatre funds of the DTJ Hradec Králové – Malšovice, from the 1930s – a gift from Jan Merta
12.	Small gifts of printed material (posters, programmes) and photographs from plays staged in theatres and booklets for the Museum library

Collections:

The collection of archive documents has been continuously replenished by printed materials, photographs from plays staged in puppet theatres, from festivals, exhibitions and the like, as well as video-recordings. All the activities of the Museum have also been continuously documented.

Records of Collections and Care:

Total of newly acquired items for the year	431
Total of new inventory numbers for the year –	955
Discarded inventory articles	0
Total number of inventory articles as on Dec. 31	43 683
Number of inventory numbers recorded in the Sbírký (Collections) programme of the Bach Systems Olomouc (the Museum started computerising its records in 1997)	16 781
Total of revised inventory numbers of articles in the collections – V sub-collections	16 006
Percentage of revised inventory numbers of articles of the total collections	36.6 %
Number of restored and conserved articles (puppets)	30
Number of repaired and cleaned articles (puppets)	215

II. Presentation of Collections

Displays and Exhibitions within the Museum

Permanent displays:

- Barrier-free (easy access) (a short history of Czech puppetry with specimens of puppets from other countries, displayed on the ground floor, intended for all visitors unable to mount the steep stairs)

- The traditional Czech puppet theatre
- The family puppet theatre
- Puppets from other countries from the Museum collections
- Luminescent theatre

On display in the entrance hall are specimens of restoration work together with a description of the initial condition, photographs and a description of the work done, and these are changed every other year. New display was made at the beginning of 2007 of a man (a marionette from the collections of the puppeteer Josef Kočka, the second half of the 19th century), repaired by an external assistant of the Museum, **Darina Kopečná**. The restoration work was reimbursed from gifts from visitors to the Museum.

Annual exhibitions:

- Twenty Years of Diversity (The Diversity Theatre - Divadlo rozmanitostí in Most)
- The Old Trouper & Puppets (A Portrait of the Artist Pavel Kalfus)
- New Additions to the Museum Collections

Short-term exhibitions in the Museum gallery:

- January 18 – March 18, 2007 Kijk&Luistermuseum, Bennekom/Ede, the Netherlands - *White dreams* (Baptismal dresses and Samplers from Holland)
- March 29 – May 27, 2007 Marie Jirásková – “*Kukly*” (“Cocoons”, an exhibition of puppets, objects and drawings)
- June 7 – August 8, 2007 Jindřich Pevný – *Women, fliers and other wonderful beings*
- September 6 – October 28, 2007 Stanislav Holý – *Jů, Hele and others*
- November 8 – December 30, 2007 (children’s exhibition)

Exhibitions Held at Other Places, Both at Home and Abroad

- exhibition continuing from 2006:

- The Castle Šternberk - *The Czech Puppet Theatre – its history and present day* – December 9, 2006 – March 4, 2007 – 2 126 visitors

- exhibitions installed in 2007:

- Theatre Museum, Cabel Factory, Helsinki, Finland – *Friends on strings* , March 15 – September 30, 2007 – 6 361 visitors
- National Czech & Slovak Museum ‘ and Library in USA, Cedar Rapids, Iowa – *Puppetry! Suspended Imagination*, April 12 – September 30, 2007 – 6 947 visitors

- Kolarovo, Slovak Republic (during the 3rd Festival “Meteorit”) - *Czech Folk Tales in Little a Fairytale Town* , May 31 – June 9, 2007 – 3 500 visitors
- The gallery of the Karel Pippich Theatre, Chrudim – *The World of Glove-puppets*, May 31 – July 15, 2007 – 1 300 visitors
- Municipal Museum in Moravsky Krumlov - *The Czech Puppet Theatre – its history and present day*+ *The Contemporary Czech Puppet Theatre* , August 8 – September 9, 2007 – 700 visitors
- Municipal Museum and Gallery in Breclav - *The Czech Puppet Theatre – its history and present day*, November 24, 2007 – January 20, 2008 – 1 691 visitors
- Municipal Museum in Pocatky - *The Czech Puppet Theatre – its history and present day*, November 30, 2007 – January 3, 2008 – 300 visitors
- The Scarabeus Gallery in Prague – *Puppets and Family Theatres*, December 12, 2007 – January 6, 2008 – 364 visitors
- The Library in Tvrdonice - *The Czech Puppet Theatre – its history and present day* – 4.11. – 3.12.2006 – 500 visitors

In 2007, one exhibition was finished and 8 exhibitions in all were installed, three of which abroad. Altogether, 23 289 people came to see the exhibitions, of which 16 808 were in other countries.

Loans of Articles for Exhibitions:

For display in mobile and other Museum exhibitions, as well as for exhibitions arranged by other institutions, a total of 2 540 articles were loaned, 326 of them to other countries.

Museum Library

Number of volumes entered into the accession catalogue and catalogued in 2007	385
Total number of volumes as on 31.12.	17 654
Number of volumes entered into the Clavius programme by 31.12. (computerisation since late 2004)	4 454
Number of readers	39
Number of volumes lent out	156
Expenditures on books in CZK	14 204.-

Publication and Publicity

Already at the end of 2006 the Museum issued a folder on the exhibitions and displays held in the Mydlář House (seat of the Museum) in 2007. In addition, in the course of 2007 it issued the already traditional folders and posters announcing every short-term exhibition held in the gallery of the Museum. Then, in the autumn of 2007, a folder was published on exhibitions to be held in 2008, so that it could be used in time for publicity purposes. All the mentioned printed matter was prepared for printing by Stanislav Fremunt (Groš Agency, Prague).

III. Other Cultural Activities

"Please Touch!"

This is the name given to a room in the Museum containing puppets, opened in 1995, and it is where the tour of the Museum usually ends up. Here visitors – and not only juveniles – can work out for themselves how to manipulate puppets and hand puppets, and how to play theatre with them.

Activity Groups for Making Puppets

- In the school term 2006/2007, one group of 5 children met in the Museum once a week.
- In the current school term, 2007/2008, there is one group of 6 children.

Single Activities Arranged for the Public

- March 21, 2007 – *Day of Puppets* – (to mark the World Day of Puppet Theatre) - free entry to Museum all day, making simple puppets, puppet theatre played by children in an activity group – in all, 232 children and 53 adults participated
- May 18, 2007 – *Chrudim Museum Night* (held in co-operation with the Regional Museum in Chrudim) allowing free entry to the Museum all day, varied programme from 7.00 p.m. to 01.00 a.m. (Hanka Voriskova, Jarka Holasova and Jakub Maksymov's puppet performances, a demonstration of carving Jaroslav Koloděj's puppets, simple puppets are made and played with, a midnight puppet astronomical clock, climbing the museum tower, and more) – 586 adults and 228 children participated
- July 1, 2007 – a night visit to the Museum, chiefly for the participants of the Puppeteers' Chrudim Festival, but open to anybody who was interested, free entry, climbing the tower; a continuous performance by the two-member Blůza's Tough Boys (Jindrich Pevny and Tereza Venclova) – 274 people participated
- September 9, 2007 – *European Heritage Days* – free entry to the Museum including the chance to climb up the little tower of the Mydlář's House – 441 adults and 229 children participating

Activities organised by others in which the Museum participated

- May 24, 2007 – March 25, 2007 – *Bambiriada* (organised by civic association, Altus Chrudim) – a demonstration of puppets and how to make them in the museum – 122 children and 22 adults participating; those who got a ticket for the event had a free entry to the Museum – 179 children made use of this opportunity
- June 13, 2007 – August 19, 2007 - *Us in 2007* – an exhibition of products made by clients of the Social Care Home in Slatiňany held in the Museum – the Museum allowed free use of its premises and people to guard the exhibition

- September 14, 2007 – September 15, 2007 - *A Fairytale Forest* - (organised by the Hlubové koření Christian association, Bojanov) – making simple puppets at one of the stops

Strolling of Puppets (to visit disabled children)

The project was prepared in the framework of the European Year of the Disabled in 2003 to bring the world of puppets to disabled children who are unable to visit the Museum or can do so with great difficulties. It is an on-going project, its programme is always adapted to the abilities of the children. Usually, a part of it was the making of simple puppets and masks, manipulation of puppets, talks about puppets, the puppet theatre and our Museum, a demonstration of puppets from our collections. A total of 5 establishments were visited and altogether the programmes were enjoyed by 84 children. In 2007, too, the project had the support of a grant from the Czech Ministry of Culture.

Programmes for groups of children

These programmes chiefly involved making simple puppets under the guidance of the Museum's educational worker. Altogether, 27 groups, 732 children, participated in the programmes.

§ 1 d

Basic Personnel Data

1. Staff Members, division according to age and sex – as on December 31, 2007

Age	Men	Women	Total	%
up to 20	-	-	-	-
21 – 30	-	1	1	5.55
31 – 40	1	2	3	16.67
41 – 50	1	4	5	27.78
51 – 60	1	3	4	22.22
60 and plus	1	4	5	27.78
total	4	14	18	100.0%
%	22.22	77.78	100.0	x

2. Staff Members, division according to qualifications and sex – as on December 31, 2007

Level of education	Men	Women	Total	%
primary	-	-	-	-
skilled worker	1	2	3	17
specialised secondary	-	2	2	11
completed secondary	1	1	2	11
completed specialised secondary	1	5	6	33
higher specialised	-	-	-	-
university	1	4	5	28
total	4	14	18	100.0

3. An Overall Figure of Average Incomes

Average gross monthly pay:	18 817.- CZK
----------------------------	--------------

4. An Overall Figure of Employment Contracts in 2006

	Number
Starting	2
Leaving	2

5. Length of Employment Contracts – to December 31, 2006

Length of Contract	Number	%
Up to 5 years	5	28
Up to 10 years	4	22
Up to 15 years	4	22
Up to 20 years	2	11
Over 20 years	3	17
total	18	100.0

6. Command of Foreign Languages

There are no requirements at any position for passing a standard language test. Staff members are required to have a general oral and written command of another language.

§ 1 e

Review of Property Managed by the Museum

Property (amount)	13 061 473.45
- of which, value of buildings	8 216 065.60
Amount depreciated by 31.12.2006	5 169 770.75

Depreciation is even (Article 31 a) Act 586/92) based on the entry price of long-term tangible assets (Article 29, Act 586/92).

§ 1 f

Budget Details

	CZK
Contribution for running costs allocated for our organisation within the budget breakdown for 2005	6 880 000
Museum income	1 220 000
Expenditures	8 100 000
An increase in the contribution for running costs by the promoter through adjustments made in the budget to	7 080 000
- of which, specific-purpose contribution	134 000
- the Cultural Activities programme - Strolling of Puppets to visit disabled children	30 000
- programme ISO/D – non-investment funds (covers for puppets and material suitable for archiving)	104 000

An Overview of Expenditures and Gains

Item	Approved budget (thousand CZK)	Adjusted budget (thousand CZK)	Reality	%
Material consumption	460	564	457.70	81.2
Energy consumption	620	620	706.41	113.9
Goods sold	220	220	205.01	93.2
Repairs and maintenance	400	400	255.92	64.0
Travel expenses	70	70	24.58	35.1
Entertainment expenses	20	20	16.24	81.2
Other services	1 200	1 200	1 013.75	84.5
Payload	3 375	3 445	3 423.05	99.4
Statutory social security	1 181	1 206	1 183.43	98.1
Statutory social expenditures	67	68	67.74	99.6
Other taxes and charges	5	5	3.91	78.2
Other fines and penalties			7.21	
Losses due to the fluctuation of exchange rates			7.48	
Other expenditures	134	134	233.40	174.2
Depreciation of long-term tangible assets	348	348	347.41	99.8
Total expenditures	8 100	8 300	7 953.24	95.8

Proceeds from Museum's own products	450			
Revenue from sales of services	250	450	349.44	77.7
Revenue from sales of goods		250	273.38	109.4
Interest			0.11	
Fund accounting	500	500	250.29	50.1
Other gains	20	20	0.02	
Operation contributions and subsidies	6 880	7 080	7 080.00	100.0
Total revenues	8 100	8 300	7 953.24	95.8

Profit	0	0	0	
---------------	---	---	---	--

Organisation assets and liabilities – on 31.12.2007

Assets		thousand CZK
Long-term low-value assets	(018)	103.64
Other long-term intangible property	(019)	190.40
Accumulated depreciation - Long-term low-value assets	(078)	- 103.64
Long-term tangible assets	(031,021,022, 028)	12 767.44
Accumulated depreciation - Long-term tangible assets	(081,082,088)	- 5 066.14
Articles on stock	(132)	1 705.17
Clients	(311)	47.85
Advance on operating costs	(314)	479.05
Receivables from employees	(335)	93.50
Petty cash	(261)	11.62
Liquid valuables (stamps and vouchers)	(263)	0.01
Current account	(241)	502.96
FKSP (cultural and social needs fund) current account	(243)	190.23
Deferred expenses	(381)	44.25
Total assets		10 966.34

Liabilities		thousand CZK
Long-term assets fund	(901)	7 891.70
Fund of current assets	(902)	200.00
Remuneration fund	(911)	353.92
Cultural and social needs fund	(912)	301.51
Reserves	(914)	804.16
Investment fund (property reproduction)	(616)	713.53
Accounts payable (suppliers)	(321)	24.39
Other payables	(325)	0.05
Payroll payable (employees)	(331)	185.24
Payables for social security and health insurance	(336)	135.61
Other direct taxes	(342)	25.71

Estimated accrued expenses	(389)	327.52
Profit or loss for the period (profit)	(963)	0
Total liabilities		10 966.34

§ 1 g

Data evaluation and analysis

1. Rationale behind budget provisions

The limit number of the institute employees was fixed to 15 (converted) for 2007 and the level for drawing funds for the salaries and wages was set at 3 345 thousand Czech crowns and other personnel expenses (OPE) at 30 thousand CZK.

By means of budget adjustments Nos. 2 and 4, the funds for wages and salaries were increased to 3 415 thousand CZK.

Another binding indicator was the transfer of an amount of 1 200 thousand CZK to the national budget, which the institution anticipated to take in from the sales of some land it did not need. As no sale was made, these funds were not transferred.

2. National budget share in financing the institution

	CZK
Planned running costs	8 300 000.00
- of which, promoter's share	6 880 000.00
Actual running costs	7 953 242.12
- of which, promoter's share	7 080 000.00
Income (excluding promoter's contribution)	873 242.12
- of which, renting revenues	42 850.00
Overall accounting of funds	250 286.00
- from reserve fund – donation from a sponsor, Holcim Prachovice	15 000.00
- from the tangible assets funds (utilised as a complementary source to obtain low-value tangible fixed assets and to finance maintenance)	235 286.00

3. Drawing on wage funds

	CZK
Drawn wages and salaries amounted to	3 387 043.00
- not fully used	27 957.00
OPE – drawn	36 008.00
- labour fringe benefits overdrawn	6 008.00

4. Research and development

There was no involvement in any scientific research programmes or projects financed from the national budget. Scientific research, made by expert staff as part of their usual working activities, concentrated on exploration necessary for the preparation of new permanent exhibitions and required no special extra expenditures.

5. Expenditures determined for investments (property reproduction)

	CZK
Investment grants from the ISPROFIN programme	0
From own funds	0

6. Membership in international organisations

- The Museum is a collective member of the Czech Centre of UNIMA, the international puppet organisation, and on top of this, Alena Exnarová an individual UNIMA member and worked in the in the board of the UNIMA Czech Centre. Membership in this organisation is helpful in making contacts and working with puppeteers, theatres and other specialised institutions in other countries, in obtaining information and articles for museum collections, in exchanging ideas and other puppet-related activities. The Museum does not pay any membership fees (this is done by the shelter Theatre Institute on behalf of the Czech Centre).
- The Museum is a collective member of the Czech Centre of SIBMAS, the international organisation of theatre libraries and museums. This is very useful for exchanging pieces of information. The Museum does not pay any membership fees

• Business trips to other countries

There were only two business trips abroad:

- USA, Iowa, Cedar Rapid – an exhibition of Czech Puppet Theatre, called *Puppetry! Suspended Imagination* – installed and launched by Radomír Licek, 6.4. – 17.4. All the costs related to the exhibition were covered by the organiser, The National Czech and Slovak Museum and Library Cedar Rapids, Iowa.
- Slovak Republic, Kolárovo – installation of an exhibition called “*České l’udové rozprávky v rozprávkovom mestečku*” (*Czech Folk Tales in Little a Fairytale Town*) – Ing. Hana Studničková, 28.5. – 12.6. The costs related to the exhibition were covered by the Česká centra Praha (Czech Centres in Prague) and the FESTIVAL Meteorit Kolárovo Civic Association.

8. Economic Result and the Transfer of Funds into the Reserve Fund

The economic result of 2007 amounted to zero and no funds were transferred into the reserve fund.

§ 1h

Data on recipients of services

Visitors to displays and exhibitions in the Museum

		<u>Number</u>	<u>Ca %</u>
Total number of visitors		20 577	100
- full admission		5 978	29.0
	- of which adults in groups	104	0.5
- reduced admission		7 906	38.4
	- of which, pensioners	1 170	5.7
	- number of children in groups	3 204	15.6
	- individual children and students	3 353	16.3
	- other reduced fees	179	0.8
Free-of-charge, total		5 615	27.3
	- of which, adults	1 636	8.0
	- of which, children under 6	3 953	19.2
	- Families of the Fund of Endangered Children	26	0.1
Foreign visitors, total		946	4.6
Family admission (2 adults + 2 children) –		269 families (1078 persons)	5.3
Additional charge allowing entry to the tower (possible for groups only)		4	0.0

Number of visitors to mobile exhibitions installed elsewhere: 23 289

Number of visitors to all cultural and educational events : 3 556

Visitors for scientific research :

In all, 12 researchers visited the Museum or requested co-operation, of which 2 from other countries: Belgium, Taiwan

Conclusion

Thanks for articles donated into Museum collections :

- To Mr Jiri Jelinek
- To Mr. Karel Mares
- To Mr. Jan Merta
- To Mr. Jindrich Pevny
- To Ms. Daniela Stejskalova
- To Mr. Jiri Vodicka
- To Mr. Karel Zatrepacek
- To the Puppet Group “C” Svitavy
- To the Puppet Group “Tlupatlapa” Svitavy
- To the Artistic Theater “Rise loutek” (Land of Puppets) Prague

Thanks for financial and other assistance:

- The Ministry of Culture of the Czech Republic
- The HOLCIM (Cesko), a.s. company
- Stanislav Fremunt from Prague
- Jaroslav Kolodej from Senice next to Podebrady
and all other colleagues and supporters

Thanks for a financial contribution for the restoration of puppets

- To the Museum visitors (2 405 CZK)

Development in the number of visitors, 2003 - 2007

	2003	2004	2005	2006	2007
Shows and exhibitions	27 120	20 350	23 649	18 607	20 577
Of which children and young adults	16 199	12 304	12 798	10 482	11 078
Other cultural events	2 732	3 444	3 982	7 025	3 556