

2008 Annual report

based on Government Decree No. 323/2005, which specifies the extent of annual report

§ 1a

Muzeum loutkářských kultur v Chrudimi

The Museum of Puppets in Chrudim

Břetislavova 74, 537 60 Chrudim
IČO (Organisation Identification No.) 00412830
Telephone +420 469 620 310
Telephone/fax +420 469 620 650
e-mail: puppets@cps.cz, puppets@puppets.cz
<http://www.puppets.cz>

Opening time:

Permanent exhibition and short-term exhibitions:

IV – V, IX: Daily except Monday 9.00 to 12.00 a.m. and 1.00 to 5.00 p.m.

VI – VIII: Daily except Monday 9.00 to 12.00 a.m. and 1.00 to 6.00 p.m.

X – III: Tuesday – Friday 9.00 to 12.00 a.m. and 1.00 to 5.00 p.m., Saturday-Sunday
1.00 to 5.00 p.m.

(Last visitors are allowed to come in one hour before lunch break or one hour before the end of the opening time.)

Museum closed: 1.-21.1., 24.-26.12. a 31.12.

Museum Library:

Tuesday and Thursday 9.00 a.m. to 2.00 p.m.

§ 1b

Mode of Establishment and Museum Promoter:

The Museum is an institution receiving contributions from the National Budget. It was established in 1972 by the East Bohemian Regional National Committee in Hradec Králové, which acted as its promoter until its own demise in December 31, 1990. Since January 1, 1991, the Czech Ministry of Culture has been acting as the Museum promoter.

The Mission and History of the Museum:

The Museum of Puppeteer Cultures (Puppet Museum) acquires, gathers together, keeps, makes records of, professionally processes and displays for the general public, evidence of the development of the Puppet Theatre, both Czech and world-wide. It first opened on July 2, 1972. It is housed in a splendid Renaissance building (No. 74 – a first category cultural monument, registered under No. 758) erected by Matěj Mydlář, a citizen

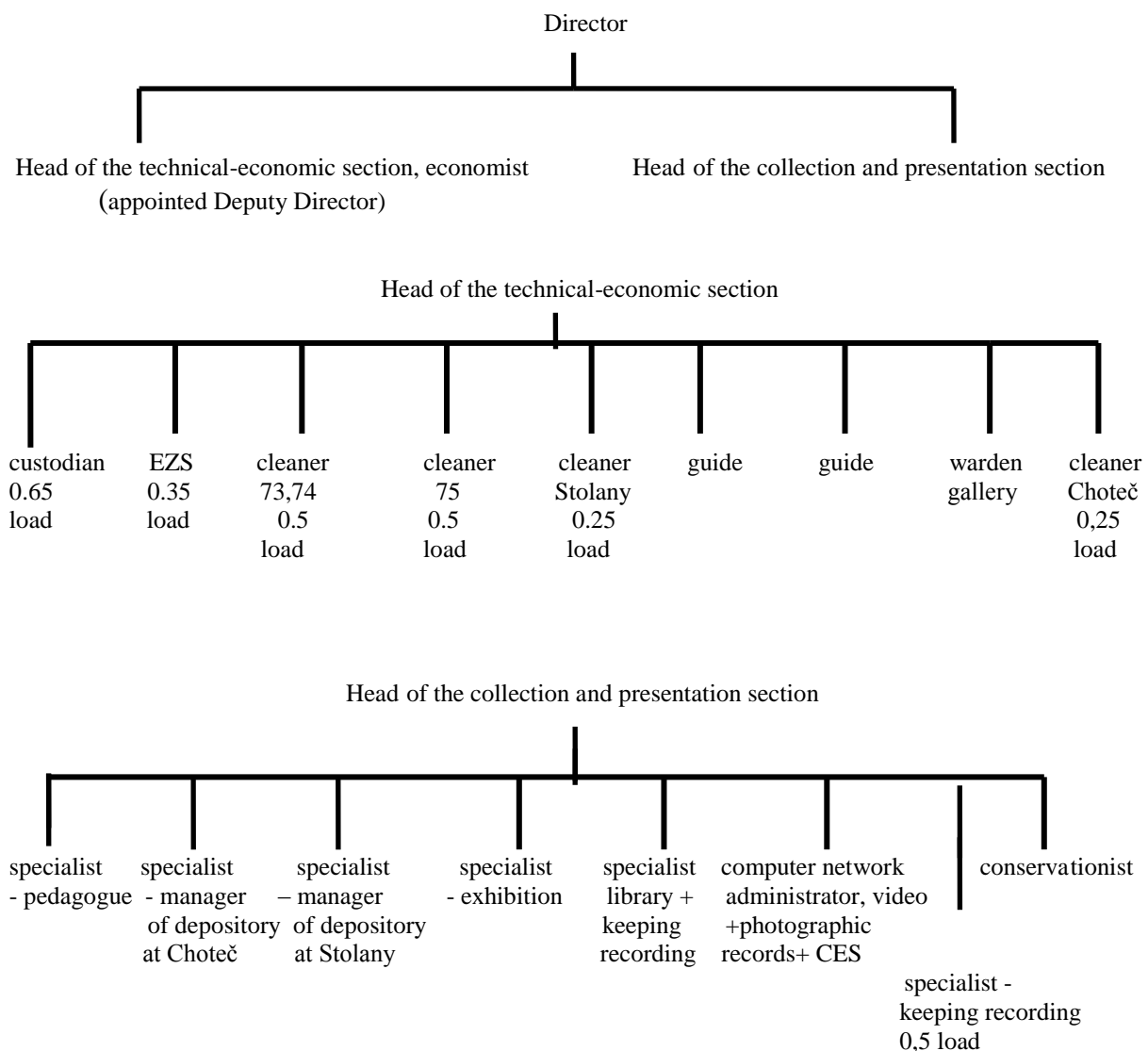
of Chrudim, in 1573 – 1576. His son Daniel later added a small tower in the form of a minaret. The town authorities renovated the house in the sixties of the last century.

Now, the Museum has also spread its exhibits to a neighbouring house (No. 75 – a second category cultural monument, No. 4548).

The creation of the museum represented fulfilment of a long-cherished idea to establish a museum of puppets from all over the world which was first broached back in 1929 at the constituent congress of the International Puppet Organisation, UNIMA, held in Prague. The foundation stone of the museum's exhibits was the private collection of Dr. Jana Malík (1904 - 1980), who was the general secretary of UNIMA for many years, and gifts from the UNIMA national centres. The number of exhibits has been gradually expanded and supplemented.

§ 1 c

Organisational Structure:



Permanent staff of the Museum as on December 31, 2008

Exnarová Alena, Mgr.	Director, head of the collection and presentation section	alena.exnarova@puppets.cz , mobil 604 280 147
Holečková Alena	appointed Deputy Director, Head of the technical-economic section, economist	alena.holeckova@puppets.cz mobil 739 084 728
Department of Collections and Presentations :		
Baboráková Jana	Conservationist	jana.baborakova@puppets.cz
Boušková Irena, Mgr.	Specialist - pedagogue	irena.bouskova@puppets.cz mobil 733 539 923
Líbalová (Breberová) Marcela, Mgr. – till May 23, 2008 (maternity leave)	Specialist – manager of depository at Chotec	
Licek Radomír	Specialist – manager of depository at Stolany	radek.licek@puppets.cz
Matysová Dagmar	Specialist – keeping recording	Tel. 469 620 310
Mensatoris Aleš, Ing. – till August 31, 2008	Computer network administrator, video and photographic records, CES	
Pilař Tomáš, MgA. – since May 12, 2008	Specialist – manager of depository at Chotec	tomas.pilar@puppets.cz
Rusek Radim – since August 28, 2008	Computer network administrator, video and photographic records, CES	radim.rusek@puppets.cz
Studničková Hana, Ing.	Specialist – foreign puppetry + mobile exhibitions	hana.studnickova@puppets.cz mobil 604 857 445
Šulajová Hana	Specialist – library + keeping records	hana.sulajova@puppets.cz Tel. 469 620 310
Technical and Economic Department:		
Brunclíková Václava –	Stolany - cleaner + EZS	
Geletová Libuše	guide	Tel. 469 620 310
Kubelková Hana	Cleaner Chrudim (73+74+75)	Tel. 603 832 356
Lédlová Jaroslava	Weekend guide	Tel. 469 620 310
Lohniská Jana	Chotec - cleaner + EZS	
Postupa Ladislav	Custodian + EZS	Mobil 739 039 647
Skopalíková Emilie	Warden in the gallery	
Šídlo Pavel	Warden in the gallery	

Consultative bodies

Collection Commission:

PhDr. Jaroslav Blecha, head of the theatre section of the Moravian Provincial Museum in Brno

Ing. Milena Burdychová, Director of the District Museum in Chrudim

Jarmil Chládek, former Director of the Puppet Museum in Chrudim

Mgr. Marcela Líbalová, specialist, Puppet Museum in Chrudim (till April 30, 2008)

Radomír Licek, specialist, Puppet Museum in Chrudim (since May 1, 2008)

PhDr. Zdeněk Zahradník, Director of the East Bohemian Museum in Hradec Kralove

The Collections Commission met on January 23, 2008 and on December 3, 2008.

Specialised Council of the Museum:

The Museum Expert Council was appointed for three years as from October 1, 2004 and upon the members' consent the appointment was prolonged by three more years. The following Council members were appointed:

Mgr. Stanislav Doubrava, Director of the Naive Theatre in Liberec

Mgr. Roman Košek, Director of the Municipal Museum and Gallery in Litomyšl

Mgr. Nina Malíková, editor-in-chief of the Puppet magazine and lecturer at DAMU (Academy of Dramatic Arts), Prague

Mgr. Iva Malinová, Head of Nursery School, Sv.Cech Street in Chrudim

Mgr. Nad'a Pemlová, Head of the Cultural Department, Regional Administration, Pardubice Region (chairperson)

Mgr. Ivan Slejška, Head of the Cultural Department, Town Council, Chrudim

Doc. Alois Tománek, puppet stage designer and teacher

- representing the Puppet Museum in Chrudim:

Mgr. Alena Exnarová, Museum Director

Alena Holečková, head of the technical-economic section and appointed Deputy Director

In 2008, the Expert Council met on April 28. It expressed its opinion on the annual statement of 2007, activities planned for 2008, the medium-term concept of the Museum for the 2001-2010 period (remaining years), the current situation in the Museum and ongoing negotiations on transferring the Museum founder from the Czech Ministry of Culture to the Pardubice Region, and also on the chief tasks the Museum is facing in 2009.

Anoutline of principal activities of organisation

I. Collection of and Care for Specimens

Purchases:

	article	CZK
1.	Moravská ústředna (Moravian Centre), manufacture of toys in Únanov – 17 glove puppets and other puppets (toys) - a sample of current mass production for which the factory has received a quality award.	4 636,-
2.	Family puppet theatre – a complete set including scenery, author Svatopluk Bartoš, 1947 + 13 puppets, mostly designed by Lubor Švorčík	8 900,-
3.	9 original marionettes from Burma and 1 mask from Indonesia (purchased in markets in Burma between 1992 and 1998) – the purchase was covered by a gift from sponsor HOLCIM (Česko) a.s.	15 000,-
4.	A complete set of a family puppet theatre, including scenery designed by Minka Podhajská and 10 turned puppets from 1920' and 1930'.	8 000,-
5.	2 DVD recordings of a workshop called “ <i>An Inspiring Legacy of Josef Skupa</i> “, held during the Skupova Plzeň 2008 festival	1 000,-
6.	Photographic documentation of the 57 th Puppeteer Chrudim National Festival of Amateur Puppet Theatre (2007) - 91 black-and-white photographs, 212x150 mm + CD carrying the photos in digital form	8 250,-
Celkem		45 786,-

Donations:

1.	Puppets + photo-documentation + program from the staging of “ <i>Sněhurka a sedm mužičků</i> ” (<i>the Snow White and Seven Little Men</i>) by Divadlo rozmanitostí in Most – a gift from the theatre
2.	Programs, posters, brochures – Artistic Stage of the Říše loutek puppet theatre, Prague – a gift from Jan Novák
3.	Catalogue to the exhibition “A View of Czech Puppetry” held in Tolosa, Spain (prepared by the department of the theatre of the Moravian Museum in Brno) + DVD of edited staged productions (shown during the exhibition)- a gift from PhDr. Jaroslav Blecha
4.	A complete set of a family puppet theatre, home made (including structural sections, stored in a box), scenery and proscenium from Svatopluk Bartoš + 26 puppets, made by František Tvrdek – a gift from Dr. Jan Bureš
5.	Scheiner’s Puppet Theatre (proscenium, structural sections and a wooden storage box which was used as a stage) + 23 puppets, 18cm tall, unspecified author – a gift from František Remta
6.	Miloslav Klíma et al. – <i>The Theatre and Interaction I and II</i> – a collection of abstracts on the subject of the research work on the Interaction of Stage Elements – a gift from professor Miloslav Klíma

7.	DVD with fairytales <i>Dvanáct měsíčků</i> (The Twelve Months) and <i>Hloupá Barka</i> (Silly Barka) as staged by Loutkové divadlo Jiskra Praha puppet theatre and Almanac to mark the 95 years of the theatre – a gift from JUDr. Petr Slunečko
8.	Smaller gifts of printed material (posters, programs) and photographs from productions of theatres and books for the Museum library

Collections:

The collection of archive documents has been continuously replenished by printed materials, photographs from plays staged in puppet theatres, from festivals, exhibitions and the like, as well as video-recordings. All the activities of the Museum have also been continuously documented.

Records of Collections and Care:

Total of newly acquired items for the year	250
Total of new inventory numbers for the year –	954
Discarded inventory articles	0
Total number of inventory articles as on Dec. 31	44 637
Number of inventory numbers recorded in the Sbírký (Collections) programme of the Bach Systems Olomouc (the Museum started computerising its records in 1997)	17 621
Total of revised inventory numbers of articles in the collections – AR sub-collections	7 815
Percentage of revised inventory numbers of articles of the total collections	17,5
Number of restored, conserved and cleaned articles (puppets)	395

II. Presentation of Collections

Displays and Exhibitions within the Museum

Permanent displays:

- Barrier-free (easy access) (a short history of Czech puppetry with specimens of puppets from other countries, displayed on the ground floor, intended for all visitors unable to mount the steep stairs)
- The traditional Czech puppet theatre
- The family puppet theatre
- Puppets from other countries from the Museum collections
- Luminescent theatre

On display in the entrance hall are specimens of restoration work together with a description of the initial condition, photographs and a description of the work done, and these are changed every other year. New display was made at the beginning of 2007 of a man (a marionette from the collections of the puppeteer Josef Kočka, the second half of the 19th century), repaired by an external assistant of the Museum, **Darina Kopečná**. The restoration work was reimbursed from gifts from visitors to the Museum.

Annual exhibitions:

- Half a Century of the DRAK Theatre
- Hana Cigánová - A Portrait of the Artist
- New Additions to the Museum Collections II

Short-term exhibitions in the Museum gallery:

- January 24 – March 30, 2008 Václav Kubát's Wooden Toys – Non-Toys
- April 10 – June 15, 2008 The Magic World of Puppets of František Pešán and Collages of Jiří Pešán
- June 26 – September 28, 2008 Václav Plechatý – At Ease (graphics, wooden sculptures, reliefs)
- October 9 – December 30, 2008 Nativity Scenes from the collections of Alena Ptáčková

Exhibitions Held at Other Places, Both at Home and Abroad

- exhibition continuing from 2007:

- Municipal Museum and Gallery in Breclav - *The Czech Puppet Theatre – its history and present day*, November 24, 2007 – January 20, 2008 – 1 691 visitors
- Municipal Museum in Pocatky - *The Czech Puppet Theatre – its history and present day*, November 30, 2007 – January 3, 2008 – 300 visitors
- The Scarabeus Gallery in Prague – *Puppets and Family Theatres*, December 12, 2007 – January 6, 2008 – 364 visitors

- exhibitions installed in 2008:

- Museum Kymenlaakson Hämeenlinna, Finland – *Friends on strings* , July 31 – September 13 ,2008 – 1 027 visitors

- The “Tunklův dvorec” Gallery in Zabreh - *The Czech Puppet Theatre – its history and present day* – April 3 – April 24, 2008 – 620 visitors
- Kijk&Luistermuseum in Bennekom/Ede, The Netherlands – *Czech Puppets* – June 13, - September 13, 2008 – 3 500 visitors
- Municipal Museum and Gallery in Dačice - *Contemporary Czech Puppet Theatre and Puppets of Jaroslav Koloděj* - June 25 – August 31, 2008 – 3 759 visitors

In 2008, three exhibitions were finished and 4 exhibitions in all were installed, two of which abroad. Altogether, 11 261 people came to see the exhibitions, of which 4 527 were in other countries.

Apart from this, 429 articles were loaned from fifteen other organisations, of these articles, 36 went abroad (Austria). Altogether, 27 135 people came to see those of the exhibitions that have already finished.

Bigger collections for following exhibitions were loaned:

- Moravian Museum in Brno - *A View of Czech Puppetry* - December 21, 2007 – March 22, 2008 (96 articles) – 6 229 visitors
- The Castle Šternberk - *Historic Fashion in Changing Times* – April 24 – November 2, 2008 (20 articles) – 2 530 visitors
- Municipal Museum and Gallery of Julie Mezerová in Úpice - *From Fairytale to Fairytale* - June 1 – August 31, 2008 (61 articles) – 1 257 visitors
- Regional Museum in Litomyšl - *From Pat to Mat up to the Deadly Invention* – June 1 – August 31, 2008 (63 articles) – 8 500 visitors
- Municipal Museum in Nová Paka - *What I have done – puppets and wood carvings (Jaroslav Doležal)* – June 22 – September 7, 2008 (31 articles) – 1 200 visitors
- The Castle Šternberk - *The Most Beautiful Christmas Gift* – December 6, 2008 – January 4, 2009 (79 articles) – 1 500 visitors
- Mistelbach, Austria – “*Verwurzeltes*” – Oktober 18, 2008 – April 13, 2009 (36 articles)

Loans of Articles for Exhibitions:

For display in mobile and other Museum exhibitions, as well as for exhibitions arranged by other institutions, a total of 1 630 articles were loaned, 36 of them to other countries. 36 articles loaned for other than exhibition purposes.

Museum Library

Number of volumes entered into the accession catalogue and catalogued in 2008	332
Total number of volumes as on 31.12.	18 215
Number of volumes entered into the Clavius programme by 31.12. (computerisation since late 2004)	4 786
Number of readers	31
Number of volumes lent out	225
Expenditures on books in CZK	14 987

Publication and Publicity

Already at the end of 2007 the Museum issued a folder on the exhibitions and displays held in the Mydlář House (seat of the Museum) in 2008. In addition, in the course of 2008 it issued the already traditional folders and posters announcing every short-term exhibition held in the gallery of the Museum. Then, in the autumn of 2008, a folder was published on exhibitions to be held in 2009, so that it could be used in time for publicity purposes. All the mentioned printed matter was prepared for printing by Stanislav Fremunt (Groš Agency, Prague).

III. Other Cultural Activities

"Please Touch!"

This is the name given to a room in the Museum containing puppets, opened in 1995, and it is where the tour of the Museum usually ends up. Here visitors – and not only juveniles – can work out for themselves how to manipulate puppets and hand puppets, and how to play theatre with them.

Activity Groups for Making Puppets

- In the school term 2007/2008, one group of 6 children met in the Museum once a week.
- In the current school term, 2008/2009, there is one group of 6 children.

Single Activities Arranged for the Public

- March 1, 2008 - *The UNIMA Club* in the Říše loutek (Realm of Puppets) theatre in Prague on the present time and future of the Museum of Puppetry – information concerning the situation in and activities of the Museum, presentation of a video-film about the Museum, a demonstration of interesting puppets from its collections, a puppet performance of Jiří Polehňa *Kterak Mydláři do Chrudimi přišli a dům svůj postavili (How the Mydlář Family came to Chrudim and Built a House There)* – organised together with the Artistic Stage of the Říše loutek puppet theatre, Prague – in all, 60 people attended the event

- March 21, 2008 – *Day of Puppets* – (to mark the World Day of Puppet Theatre) - free entry to Museum all day, making simple puppets, puppet theatre played by children in an activity group – in all, 162 participants
- May 18, 2008 – *Chrudim's Museum Night* – (organised together with the Regional Museum in Chrudim) free entry to the museums from 7 pm to 1 am, extensive program – motto: Into the history of Chrudim after the headless Capuchin, bum-bailiff, parson Koniáš, Goldie Locks ... wandering around Chrudim. There were 4 stops in the Museum of Puppetry, response to one of the quiz questions – the assessment and awards in the Regional Museum. Continuous performances were given by Hana Voříšková for one or two spectators – *Greenland Song* – attended by 350 adults and 135 children
- June 30, 2008 – at 10 pm a night tour of the Museum, especially for participants in the nation-wide Puppeteers Chrudim festival – during the tour, two performances were given by Hana Voříšková and Helena Vedralová - *A Pear Tree is Standing in the Field* – a total of 496 people came
- September 6, 2008 - Celebrations of the 50th anniversary of the Drak Theater in Hradec Králové – participants in the celebration came to the Museum and witnessed a program accompanying a one-year-long exhibition on the Theatre held in the Museum – in all, 60 participants, including guests from other countries, came
- September 13, 2008 – *European Heritage Days* – free entry to the Museum including the chance to climb up the little tower of the Mydlář's House – 1 039 people participating

Activities organised by others in which the Museum participated

- May 22, 2008 – March 23, 2008 – *Bambiriada* (organised by civic association, Altus Chrudim) – a demonstration of puppets and how to make them in the museum – 120 children participating; those who got a ticket for the event had a free entry to the Museum – 39 children made use of this opportunity

Strolling of Puppets (to visit disabled children)

The project was prepared in the framework of the European Year of the Disabled in 2003 to bring the world of puppets to disabled children who are unable to visit the Museum or can do so with great difficulties. It is an on-going project, its programme is always adapted to the abilities of the children. Usually, a part of it was the making of simple puppets and masks, manipulation of puppets, talks about puppets, the puppet theatre and our Museum, a demonstration of puppets from our collections. In 2008, the pedagogic worker of the Museum did not travel around with her program but she made new contacts with the TyfloCentre society in Hradec Králové, and, so far, its 11 members with impaired eye sight and their assistants attended their first program in the Museum. This cooperation continues in 2009. And if there is interest, the touring program, will continue as well.

Programmes for groups of children

These programmes chiefly involved making simple puppets under the guidance of the Museum's educational worker. Altogether, 48 groups, 824 children and 107 adults, participated in the programmes.

§ 1 d

Basic Personnel Data

1. Staff Members, division according to age and sex – as on December 31, 2008

Age	Men	Women	Total	%
up to 20	-	-	-	-
21 – 30	2	-	2	11.11
31 – 40	1	2	3	16.67
41 – 50	0	4	4	22.22
51 – 60	1	3	4	22.22
60 and plus	1	4	5	27.78
total	4	14	18	100.0%
%	27.78	72.22	100.0	x

2. Staff Members, division according to qualifications and sex – as on December 31, 2008

Level of education	Men	Women	Total	%
primary	-	-	-	-
skilled worker	2	3	5	27.78
specialised secondary	-	2	2	11.11
completed secondary	1	1	2	11.11
completed specialised secondary	1	4	5	27.78
higher specialised	-	-	-	-
university	1	3	4	22.22
total	5	13	18	100.0

3. An Overall Figure of Average Incomes

Average gross monthly pay:	19 124.- CZK
----------------------------	--------------

4. An Overall Figure of Employment Contracts in 2008

	Number
Starting	2
Leaving	2

5. Length of Employment Contracts – to December 31, 2008

Length of Contract	Number	%
Up to 5 years	5	27.78
Up to 10 years	4	22.22
Up to 15 years	4	22.22
Up to 20 years	-	-
Over 20 years	5	27.78
total	18	100.0

6. Command of Foreign Languages

There are no requirements at any position for passing a standard language test. Staff members are required to have a general oral and written command of another language.

§ 1 e

Review of Property Managed by the Museum

Property (amount)	14 202 280.47
- of which, value of buildings	8 216 065.60
Amount depreciated by 31.12.2006	5 541 157.95

Depreciation is even (Article 31 a) Act 586/92) based on the entry price of long-term tangible assets (Article 29, Act 586/92).

§ 1 f

Budget Details

	CZK
Contribution for running costs allocated for our organisation within the budget breakdown for 2005	6 897 000
Museum income	1 210 000
Expenditures	8 107 000
An increase in the contribution for running costs by the promoter through adjustments made in the budget to	7 425 000
• of which, specific-purpose contribution	228 000
- programme ISO/D – non-investment funds (cover for puppets)	228 000

An Overview of Expenditures and Gains

Item	Approved budget (thousand CZK)	Adjusted budget (thousand CZK)	Reality	%
Material consumption	470	698	514	73.6
Energy consumption	720	884	769	89.8
Goods sold	180	180	305	169.4
Repairs and maintenance	400	400	479	119.7
Travel expenses	30	30	38	126.7
Entertainment expenses	16	16	14	87.5
Other services	1 012	1 012	915	90.4
Payload	3 425	3 524	3 472	98.5
Statutory social security	1 199	1 234	1 208	97.9
Statutory social expenditures	68	70	69	98.6
Other taxes and charges	4	4	2	50.0
Other expenditures	235	235	170	72.3
Depreciation of long-term tangible assets	348	348	352	101.1
Total expenditures	8 107	8 635	8 307	96.2

Revenue from sales of services	400	400	275	68.7
Revenue from sales of goods	300	300	253	84.3
Fund accounting	500	500	232	46.4
Other gains	10	10	122	1220.0
Operation contributions and subsidies	6 897	7 425	7 425	100.0
Total revenues	8 107	8 635	8 307	96.2

Profit	0	0	0	
---------------	---	---	---	--

Organisation assets and liabilities – on 31.12.2008

Assets		thousand CZK
Long-term low-value assets	(018)	103.64
Other long-term intangible property	(019)	190.40
Accumulated depreciation - Long-term low-value assets	(078)	- 103.64
Long-term tangible assets	(031,021,022, 028)	13 770.37
Long-term tangible assets under construction	(042)	137.87
Accumulated depreciation - Long-term tangible assets	(081,082,088)	- 5 437.52
Articles on stock	(132)	1 557.19
Clients	(311)	9.67
Advance on operating costs	(314)	419.76
Receivables from employees	(335)	50.00
Petty cash	(261)	3.70
Liquid valuables (stamps and vouchers)	(263)	0.08
Current account	(241)	376.75
FKSP (cultural and social needs fund) current account	(243)	274.72
Deferred expenses	(381)	60.37
Total assets		11 413.36

Liabilities		thousand CZK
Long-term assets fund	(901)	8 523.25
Fund of current assets	(902)	200.00
Remuneration fund	(911)	350.92
Cultural and social needs fund	(912)	343.41
Reserves	(914)	670.57
Investment fund (property reproduction)	(616)	595.71
Accounts payable (suppliers)	(321)	60.06
Other payables	(325)	0.04
Payroll payable (employees)	(331)	191.31
Payables for social security and health insurance	(336)	133.34
Other direct taxes	(342)	21.91
Estimated accrued expenses	(389)	319.84
Profit or loss for the period (profit)	(963)	0
Total liabilities		11 413.36

§ 1 g

Data evaluation and analysis

1. Rationale behind budget provisions

The limit number of the institute employees was fixed to 15 (converted) for 2008 and the level for drawing funds for the salaries and wages was set at 3 395 thousand Czech crowns and other personnel expenses (OPE) at 30 thousand CZK.

By means of budget adjustments Nos. 2 and 4, the funds for wages and salaries were increased to 3 494 thousand CZK.

Another binding indicator was the transfer of an amount of 1 100 thousand CZK to the national budget, which the institution anticipated to take in from the sales of some land it did not need. As no sale was made, these funds were not transferred.

2. National budget share in financing the institution

	CZK
Planned running costs	8 107 000.00
- of which, promoter's share	6 897 000.00
Actual running costs	8 307 159.28
- of which, promoter's share	7 425 000.00

Income (excluding promoter's contribution)	882 159.28
- of which, renting revenues	51 600.00
Overall accounting of funds	232 283.87
• from reserve fund	146 250.80
- of which, donation from a sponsor, Holcim Prachovice	15 000.00
- of which, unsecured requirements coverage	131 250.80
- from the tangible assets funds (utilised as a complementary source to obtain low-value tangible fixed assets and to finance maintenance)	86 033.07

3. Drawing on wage funds

	CZK
Drawn wages and salaries amounted to	3 442 317
- not fully used	51 683
OPE – drawn	30 001
- labour fringe benefits overdrawn	1

4. Research and development

There was no involvement in any scientific research programmes or projects financed from the national budget. Scientific research, made by expert staff as part of their usual working activities, concentrated on exploration necessary for the preparation of new permanent exhibitions and required no special extra expenditures.

5. Expenditures determined for investments (property reproduction)

	CZK
Investment grants from the ISO/D programme - sliding frames for storing puppets	599 760.00
From own funds – Renault Megan car	384 199.02

6. Membership in organisations

- Membership in international organisations

- The Museum is a collective member of the Czech Centre of UNIMA, the international puppet organisation, and on top of this, Alena Exnarová an individual UNIMA member and worked in the Plenary Session of the Czech UNIMA Centre and represented the centre in the grants commission for non-professional arts of the Czech Ministry of culture (theatre arts). Membership in this organisation is helpful in making contacts and working with puppeteers, theatres and other specialised institutions in other countries, in obtaining information and articles for museum collections, in exchanging ideas and other puppet-related activities. The Museum does not pay any membership fees (this is done by the shelter Theatre Institute on behalf of the Czech Centre).
- The Museum is a collective member of the Czech Centre of SIBMAS, the international organisation of theatre libraries and museums. This is very useful for exchanging pieces of information. The Museum does not pay any membership fees

- Membership in national organisations

- The Museum is a collective member of the Czech Association of Museums and Galleries.
- Alena Exnarová is a member of the Association of Professional Puppeteers, member of the professional council for puppets at NIPOS-ARTAMA Praha and in 2008 she worked in juries during three regional puppet festivals (Turnov, Chrudim, Hradec Králové), from which the best groups proceed to the nation-wide Puppeteer Festival in Chrudim. She published articles in professional magazines about these festivals and other events (magazines Loutkář, Amatérská scéna, Divadelní hromada)

7. Business trips to other countries

There were only three business trips abroad:

- The puppet museum Múzeum bábkárskych kultúr a hračiek Modrý Kameň + the state puppet theatre Štátne bábkové divadlo Bratislava, Slovakia + prof. Hana Cigánová – transporting articles for the exhibition of Hana Cigánová – on 17.1.2008 - Licek
- Kijk&Luistermuseum Bennekom/Ede, the Netherlands – installation and opening of an exhibition of Czech puppets – 11.-14.6.2008 – participants: Exnarová, Studničková, Licek
- Banská Bystrica, Slovak Republic – participation in the International Puppet Festival Bábkárska Bystrica – 2. – 5.10.2008 – Licek, Pilař, Studničková

8. Economic Result and the Transfer of Funds into the Reserve Fund

The economic result of 2008 amounted to zero and no funds were transferred into the reserve fund.

§ 1h

Data on recipients of services

Visitors to displays and exhibitions in the Museum

		<u>Number</u>	<u>Ca %</u>
Total number of visitors		18 241	100
- full admission		5 216	28.6
	- of which adults in groups	44	0.2
- reduced admission		5 900	32.3
	- of which, pensioners	910	5.0
	- number of children in groups	2 670	14.6
	- individual children and students	2 207	12.1
	- other reduced fees	113	0.6
Free-of-charge, total		5 405	29.6
	- of which, adults	1 681	9.2
	- of which, children under 6	3 720	20.4
	- Families of the Fund of Endangered Children	4	
Foreign visitors, total		628	3.4
Family admission (2 adults + 2 children) –		273 (1 092 lidí)	6.0
Additional charge allowing entry to the tower (possible for groups only)		0	0

Where visitors to the Museum in 2008 came from

(numbers of people visiting the Museum on the days of free entry and separate events are not included)

Odkud pocházeli návštěvníci	Uvedeno v %
Chrudim	21,4
The Region of Pardubice (except Chrudimi)	29,1
Czech Republic except the Region of Pardubice	45,0
Foreign countries	4,5

Number of visitors to mobile exhibitions installed elsewhere: 11 261

Number of visitors to all cultural and educational events : 3 492

Visitors for scientific research :

In all, 16 researchers visited the Museum or requested co-operation, of which 6 from other countries: France, Hungary, Germany and USA.

Conclusion

Thanks for articles donated into Museum collections :

- To Mr Jiri Jelinek
- To Mr. Karel Mares
- To Mr. Jan Merta
- To Mr. Jindrich Pevny
- To Ms. Daniela Stejskalova
- To Mr. Jiri Vodicka
- To Mr. Karel Zatrepacek
- To the Puppet Group “C” Svitavy
- To the Puppet Group “Tlupatlapa” Svitavy
- To the Artistic Theater “Rise loutek” (Land of Puppets) Prague

Thanks for financial and other assistance:

- The Ministry of Culture of the Czech Republic
- The HOLCIM (Cesko), a.s. company
- Stanislav Fremunt from Prague
- Jaroslav Kolodej from Senice next to Podebrady
and all other colleagues and supporters

Thanks for a financial contribution for the restoration of puppets

- To the Museum visitors (2 405 CZK)

Development in the number of visitors, 2004 - 2008

	2004	2005	2006	2007	2008
Shows and exhibitions	20 350	23 649	18 607	20 577	18 241
Of which children and young adults	12 304	12 798	10 482	11 078	8 197
Other cultural events	3 444	3 982	7 025	3 556	3 492

Text of the Annual Report : Alena Exnarová, Alena Holečková
February 2009