

2009 Annual report

based on Government Decree No. 323/2005, which specifies the extent of annual report

§ 1a

Muzeum loutkářských kultur v Chrudimi

The Museum of Puppets in Chrudim

Břetislavova 74, 537 60 Chrudim

IČO (Organisation Identification No.) 00412830

Telephone +420 469 620 310

Telephone/fax +420 469 620 650

e-mail: puppets@puppets.cz

<http://www.puppets.cz>

Opening time:

Permanent exhibition and short-term exhibitions:

IV – V, IX: Daily except Monday 9.00 to 12.00 a.m. and 1.00 to 5.00 p.m.

VI – VIII: Daily except Monday 9.00 to 12.00 a.m. and 1.00 to 6.00 p.m.

X – III: Tuesday – Friday 9.00 to 12.00 a.m. and 1.00 to 5.00 p.m., Saturday-Sunday 1.00 to 5.00 p.m.

(Last visitors are allowed to come in one hour before lunch break or one hour before the end of the opening time.)

Museum closed: 1.-21.1.. From 1.10. closed due to construction work connected with the installation of a lift to enable easy access to the museum.

Museum Library:

Tuesday and Thursday 9.00 a.m. to 2.00 p.m. (from 1.10. closed due to construction work connected with the installation of a lift)

§ 1b

Mode of Establishment and Museum Promoter:

The Museum is an institution receiving contributions from the National Budget. It was established in 1972 by the East Bohemian Regional National Committee in Hradec Králové, which acted as its promoter until its own demise in December 31,1990. Since January 1, 1991, the Czech Ministry of Culture has been acting as the Museum promoter.

The Mission and History of the Museum:

The Museum of Puppeteer Cultures (Puppet Museum) acquires, gathers together, keeps, makes records of, professionally processes and displays for the general public, evidence of the development of the Puppet Theatre, both Czech and world-wide. It first

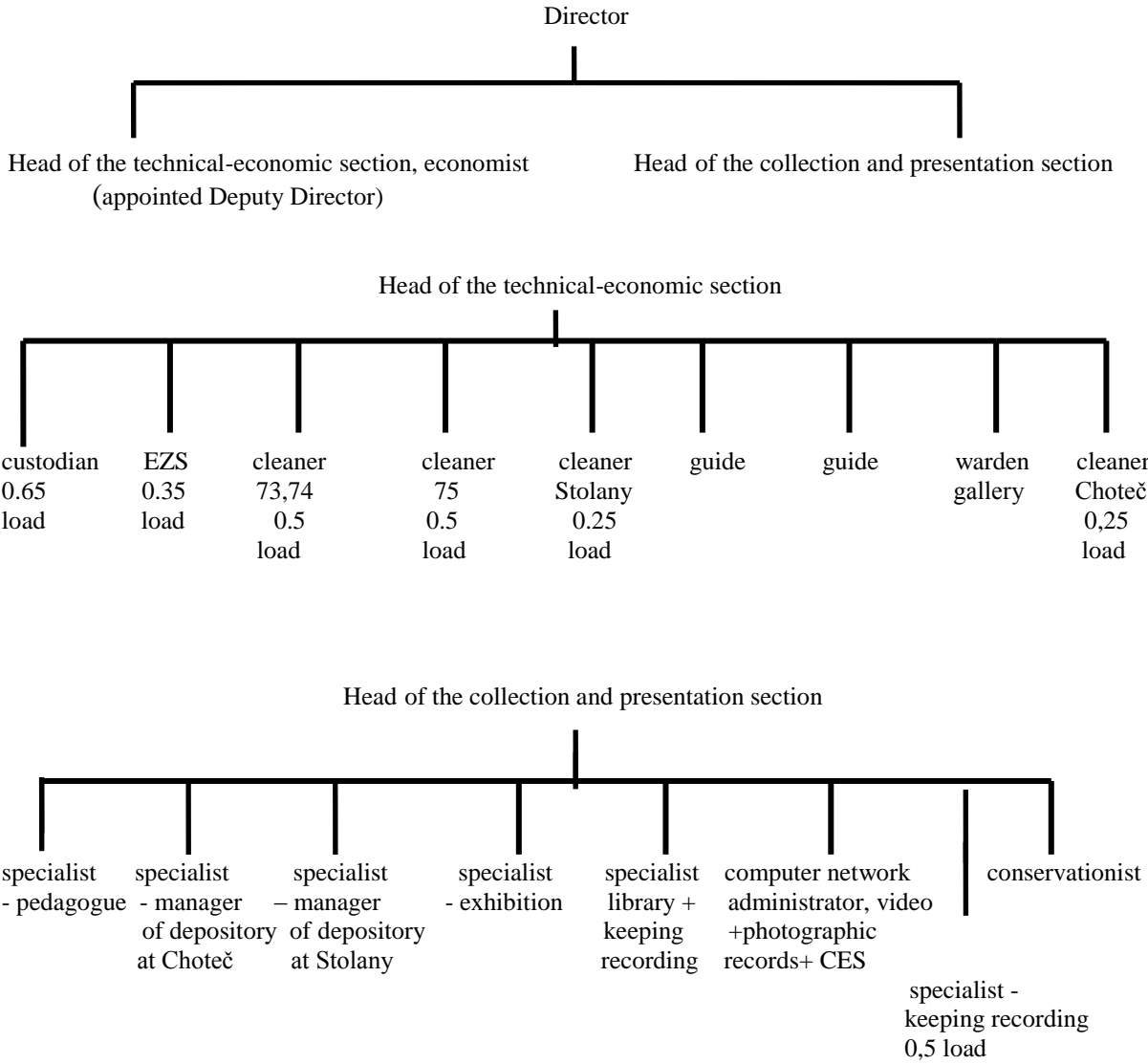
opened on July 2, 1972. It is housed in a splendid Renaissance building (No. 74 – a first category cultural monument, registered under No. 758) erected by Matěj Mydlář, a citizen of Chrudim, in 1573 – 1576. His son Daniel later added a small tower in the form of a minaret. The town authorities renovated the house in the sixties of the last century.

Now, the Museum has also spread its exhibits to a neighbouring house (No. 75 – a second category cultural monument, No. 4548).

The creation of the museum represented fulfilment of a long-cherished idea to establish a museum of puppets from all over the world which was first broached back in 1929 at the constituent congress of the International Puppet Organisation, UNIMA, held in Prague. The foundation stone of the museum’s exhibits was the private collection of Dr. Jana Malík (1904 - 1980), who was the general secretary of UNIMA for many years, and gifts from the UNIMA national centres. The number of exhibits has been gradually expanded and supplemented.

§ 1 c

Organisational Structure:



Permanent staff of the Museum as on December 31, 2009

Exnarová Alena, Mgr.	Director, head of the collection and presentation section	alena.exnarova@puppets.cz , mobil +420 604 280 147
Holečková Alena	appointed Deputy Director, Head of the technical-economic section, economist	alena.holeckova@puppets.cz mobil +420 739 084 728
Department of Collections and Presentations :		
Baboráková Jana	Conservationist	jana.baborakova@puppets.cz
Boušková Irena, Mgr.	Specialist - pedagogue	irena.bouskova@puppets.cz mobil +420 733 539 923
Licek Radomír	Specialist – manager of depository at Stolany	radek.licek@puppets.cz mobil +420 603 194 513
Matysová Dagmar	Specialist – keeping recording	Tel. +420 469 620 310
Pilař Tomáš, MgA.	Specialist – manager of depository at Chotec	tomas.pilar@puppets.cz tel. +420 469 620 310
Rusek Radim	Computer network administrator, video and photographic records, CES	radim.rusek@puppets.cz tel. +420 469 620 310
Studníčková Hana, Ing.	Specialist – foreign puppetry + mobile exhibitions	hana.studnickova@puppets.cz mobil +420 604 857 445
Šulajová Hana	Specialist – library + keeping records	hana.sulajova@puppets.cz Tel. +420 469 620 310
Technical and Economic Department:		
Brunclíková Václava –	Stolany - cleaner + EZS	
Geletová Libuše	guide	Tel. +420 469 620 310
Kubelková Hana	Cleaner Chrudim (73+74+75)	Tel.+420 603 832 356
Lédlová Jaroslava	Weekend guide	Tel. +420 469 620 310
Lohniská Jana – till March 31, 2009	Chotec - cleaner + EZS	
Postupa Ladislav	Custodian + EZS	Mobil +420 739 039 647
Pražanová Vendulka – since April 1, 2009	Chotec - cleaner + EZS	Mobil +420 731 151 530
Skopalíková Emilie – till September, 30	Warden in the gallery	
Šídlo Pavel – till September 30, 2009	Warden in the gallery	

Consultative bodies

Collection Commission:

PhDr. Jaroslav Blecha, head of the theatre section of the Moravian Provincial Museum in Brno

Ing. Milena Burdychová, Director of the District Museum in Chrudim

Jarmil Chládek, former Director of the Puppet Museum in Chrudim

Radomír Licek, specialist, Puppet Museum in Chrudim

PhDr. Zdeněk Zahradník, Director of the East Bohemian Museum in Hradec Kralove

The Collections Commission met on December 7, 2009.

Specialised Council of the Museum:

In 2009, the Museum Board of Experts comprised of the following people:

Mgr. Pavel Kobetič, Deputy Mayor of Chrudim

Mgr. Roman Košek, Director of the Municipal Museum and Gallery in Litomyšl

MgA. Miloslav Kučera, an advisor of the Councillor of the Pardubice Region in charge of Culture

Mgr. Nina Malíková, editor-in-chief of the Puppet magazine and lecturer at DAMU (Academy of Dramatic Arts), Prague

Mgr. Iva Malinová, Head of Nursery School, Sv.Cech Street in Chrudim

Mgr. Nad'a Pemlová, a former head of the Cultural Department, Regional Administration, Pardubice Region (chairperson)

Mgr. Ivan Slejška, a former head of the Municipal Cultural Department

Doc. Alois Tománek, puppet stage designer and teacher

- representing the Puppet Museum in Chrudim:

Mgr. Alena Exnarová, Museum Director

Alena Holečková, head of the technical-economic section and appointed Deputy Director

In 2009, the Board of Experts met on March 23 to discuss a number of issues, above all the 2008 Annual Report, a plan of activities for 2009, the Museum medium-term concept for the 2009-2014 period, a concept of acquisitions of new articles from 2009 to 2014 and the chief tasks of the Museum in 2010 (in two options: one – if the Museum would receive the finances in 2009 for the installation of a lift to enable a barrier-free access, and the other – should no money be allocated).

Anoutline of principal activities of organisation

I. Collection of and Care for Specimens

Purchases:

	article	CZK
1.	Catalogue to the exhibition <i>A Puppet – the most beautiful present</i>	35,-
2.	DVD – film <i>Posledná maringotka (The Last Caravan)</i>	600,-

3.	Photographic documentation of the 58 th Puppeteer Chrudim National Festival of Amateur Puppet Theatre (2009)	8 500,-
4.	The Little Theatre in a Suitcase, designed by L.Procházková, producer: Hyperion, Company Limited, Prague 2009	2 666,-
Celkem		11 801,-

Donations:

1.	DVD <i>UNIMA celebrates its 80th anniversary or 155 Kašpáreks (Caspers) have met</i> - a gift from the Umělecká scéna Říše loutek Praha (the Artistic Theatre of the Realm of Puppets in Prague)
2.	A replica of a shadow puppet camel – a gift from the UNIMA President Dadi Pudumjee, India
3.	Negatives containing puppetry themes from the assets of photographer Zdeněk Podlesný – a gift from Eva Podlesná, Praha
4.	Exlibris of Jan Kavan showing a Kašpar (Casper) – a gift from Jiří Soukup, Hradec Králové
5.	Draft stage designs by Jaroslav Milfajt for the staging of <i>Sluha a tři mušketýři (The Servant and Three Musketeers)</i> , Divadlo rozmanitostí in Most, 8 items – a gift from the author
6.	A set of materials for the library and a sub-collection of archive materials – a gift from Nina Malíková and Alois Tománek, Praha
7.	A set of materials for the sub-collection of archive materials – a gift from Jaroslav Doležal, Hradec Králové
8.	Lenka Schubertová: <i>Loutkářská tvorba rodiny Havlíkových (The Puppeteer Work of the Havlík's Family – a bachelor theses)</i> – a gift from the author
9.	A guide of the Museum of Czech Amateur Theatre at the Chateau in Miletín (authors: Jiří Valenta and Martin Taller, 2009) – a gift from the Museum
10.	A booklet by Igor Rymarenko <i>Dekorácie českých umelcov pre bábkové divadlo (Stage Scenery Made by Czech Artists for the Puppet Theatre)</i> + instructions for making furniture for a puppet theatre – a gift from Igor Rymarenko and Múzeum bábkárskych kultúr a hračiek (Museum of Puppetry and Toys), Modrý Kameň, Slovakia
11.	Smaller gifts of printed material (posters, programs) and photographs from productions of theatres and books for the Museum library

Collections:

The collection of archive documents has been continuously replenished by printed materials, photographs from plays staged in puppet theatres, from festivals, exhibitions and the like, as well as video-recordings. All the activities of the Museum have also been continuously documented.

Records of Collections and Care:

Total of newly acquired items for the year	206
Total of new inventory numbers for the year –	439
Discarded inventory articles	0
Total number of inventory articles as on Dec. 31	45 076
Number of inventory numbers recorded in the Sbírký (Collections) programme of the Bach Systems Olomouc (the Museum started computerising its records in 1997)	18 359
Total of revised inventory numbers of articles in the collections – L sub-collections and SC subcollections	6 106
Percentage of revised inventory numbers of articles of the total collections	13,5
Number of restored, conserved and cleaned articles (puppets)	247

II. Presentation of Collections

Displays and Exhibitions within the Museum

Permanent displays:

- Barrier-free (easy access) (a short history of Czech puppetry with specimens of puppets from other countries, displayed on the ground floor, intended for all visitors unable to mount the steep stairs)
- The traditional Czech puppet theatre
- The family puppet theatre
- Puppets from other countries from the Museum collections
- Luminescent theatre

On display in the entrance hall are specimens of restoration work together with a description of the initial condition, photographs and a description of the work done, and these are changed every other year. New display was made at the beginning of 2009 of a man with a moustache (a marionette from the collections of the puppeteer Josef Kočka, the second half of the 19th century), repaired by an external assistant of the Museum, **Darina Kopečná**. The restoration work was reimbursed from gifts from visitors to the Museum.

Annual exhibitions:

- The Liberec Naive Theatre in Museum Collections
- Jaroslav Milfajt - A Portrait of the Artist
- Shadow Theatre

Short-term exhibitions in the Museum gallery:

- January 22 – April 26, 2009 Zdeněk Nytra – Selection from his work (puppets, pictures)
- May 5 – September 13, 2009 UNIMA 2009 (80 years of the international puppetry organisation)

Two of the planned exhibitions had to be postponed to 2010 due to the Museum being closed from October 1, 2009 for the installation of a lift.

A short-term exhibition in the multi-purpose room:

Malované opony (Painted Curtains) – an itinerant exhibition set up by the Museum of Czech Amateur Theatre, Miletín

Exhibitions Held at Other Places, Both at Home and Abroad

- exhibition continuing from 2008:

- Kotka, Finland – *Friends on strings* , October 30, 2008 – February 15 ,2009 – 11 568 visitors
- The castle Šternberk - *A Christmas Exhibition* (puppets were a part of a large exhibition) – November 22, 2008 – February 1, 2009 – 2 500 visitors
- Mistelbach, Austria – “*Verwurzelt*” – Oktober 6, 2008 – April 17, 2009 - 5 730 visitors

- exhibitions installed in 2009:

- The castle Šternberk - *History in Changing Times* (puppets were a part of a large exhibition) – June 1 – October 31, 2009 – 20 000 visitors
- Municipal Museum in Ústí nad Orlicí – *Puppets* – April 2 – June 28, 2009 – 1 327 visitors
- Cultural centre of the town Boskovice – *The Czech Puppet Theatre – its history and present day* – June 2 – July 12, 2009 – 3 948 visitors
- Municipal Museum in Strážnice – *The Czech Family Puppet Theatre* - July 10 – October 29, 2009 – 1 300 visitors

- Sladovna (“malthouse”) Písek - *The Czech Puppet Theatre – its history and present day* – July 22 – September 20, 2009 – 4 500 visitors
- Ostrava – New Town Hall (in the framework of an international puppet festival *Spectaculo interesse*) – *UNIMA 2009* – September 29 – October 28, 2009 – 1 179 visitors
- Chaberský dvůr, Dolní Chabry – *Fairytales Winter* – December 1, 2009 – January 27, 2010 – 600 visitors

In 2009, three exhibitions were finished (two of which abroad) and 7 exhibitions in all were installed. Altogether, 52 652 people came to see the exhibitions, of which 17 298 were in other countries.

Loans of Articles for Exhibitions:

For display in mobile and other Museum exhibitions, as well as for exhibitions arranged by other institutions, a total of 1 808 articles were loaned, 217 of them to other countries. 31 collection articles loaned for another purpose.

Museum Library

Number of volumes entered into the accession catalogue and catalogued in 2009	14
Total number of volumes as on 31.12.	18 227
Number of volumes entered into the Clavius programme by 31.12.	5 851
Number of readers	16
Number of volumes lent out	168
Expenditures on books in CZK	3 159

Publication and Publicity

Already at the end of 2008 the Museum issued a folder on the exhibitions and displays held in the Mydlář House (seat of the Museum) in 2009. In addition, in the course of 2009 it issued the already traditional folders and posters announcing every short-term exhibition held in the gallery of the Museum.

III. Other Cultural Activities

"Please Touch!"

This is the name given to a room in the Museum containing puppets, opened in 1995, and it is where the tour of the Museum usually ends up. Here visitors – and not only juveniles – can work out for themselves how to manipulate puppets and hand puppets, and how to play theatre with them.

Activity Groups for Making Puppets

- In the school term 2008/2009, one group of 5 children met in the Museum once a week. Apart from other usual activities and public performances on various occasions, the educationalist prepared an event for members of the hobby puppet group “Sleeping in the Museum” (making pictures, playing games, reading, singing, cooking, etc.) – held at a May weekend and loved by everybody who took part.
- In the school term 2009/2010, the hobby group did not start its activities until the second school term as the Museum was being reconstructed and was closed to the public.

Programmes for groups of children

These programmes chiefly involved making simple puppets under the guidance of the Museum’s educational worker. Altogether, 20 groups, 1 046 children and 86 adults, participated in the programmes. There was no interest in our touring programmes (Puppets travelling to see children with a handicap) in 2009.

Holidays with puppets

From 17 to 21 August, a holiday week was organised in the Museum for children aged 7-11. The program was not only to provide them a closer look at the Museum, but, above all, to show them what puppet theatre and puppetry is about. Nine children participated in the event that was held for the first time. It was enjoyed by both the children and their parents.

Celebrations of the 80th anniversary of the UNIMA

May 22 marked the 80th anniversary of the International Organisation of Puppeteers UNIMA in Chrudim – a delegation of foreign guests accompanied by Czech members of the UNIMA Presidium visited Chrudim (altogether 10 people – a thorough tour of the Museum, seeing a performance in the theatre and a dinner with the Mayor of Chrudim, Jan Čechlovský). The foreign guests included: UNIMA President Dadi Pudumjee (India), Secretary General Jacques Trudeau (Canada), Ivica Ozábalová (Slovakia), Miguel Arreche (Spain), Mona Wiig (Norway). The next day, the celebration continued on a wider scale in Prague, where UNIMA was founded 80 years ago

Single Activities Arranged for the Public

- March 21, 2009 – *Day of Puppets* – (to mark the World Day of Puppet Theatre) - free entry to Museum all day, making simple puppets, puppet theatre played by children in an activity group – in all, 137 participants
- May 15, 2009 – *Chrudim’s Museum Night* – (organised together with the Regional Museum in Chrudim) free entry to the museums and varied programme (puppet performances, simple puppets are made and played with, u.a.) from 7 pm to 12 pm, – attended by 326 adults and 154 children
- May 28, 2009 - *The launch of a stamp featuring Spejbl and Hurvínek* from the emission For Children (in cooperation with the Union of Czech Philatelists) - apart from pupils from Chrudim’s Basic School of Arts who performed How S + H Made Buns, Spejbl and Hurvínek themselves came onto the stage and the launch was made by Helena Štáchová (Director of the Spejbl and Hurvínek Theatre) together with the author of the art design of the stamp, Mrs Hana Čápková.

- July 3, 2009 – at 10 pm a night tour of the Museum, especially for participants in the nation-wide Puppeteers Chrudim festival – during the tour a toast was drunk in a Museum Tavern (open during the Festival) on the Museum terrace to a number of people celebrating an anniversary – a total of 403 people came
- September 12, 2009 – *European Heritage Days* – free entry to the Museum including the chance to climb up the little tower of the Mydlář's House – 891 people participating

Activities organised by others in which the Museum participated

- June 4 – June 5, 2009 – *Bambiriada* (organised by civic association, Altus Chrudim) – those who got a ticket for the event had a free entry to the Museum - a demonstration of puppets and how to make them in the Museum – 163 children participating

§ 1 d

Basic Personnel Data

1. Staff Members, division according to age and sex – as on December 31, 2009

Age	Men	Women	Total	%
up to 20	-	-	-	-
21 – 30	2	-	2	13.33
31 – 40	1	2	3	20.00
41 – 50	0	3	3	20.00
51 – 60	1	3	4	26.67
60 and plus		3	3	20.00
total	4	11	15	100.0%
%	26.67	73.33	100.0	x

2. Staff Members, division according to qualifications and sex – as on December 31, 2009

Level of education	Men	Women	Total	%
primary	-	-	-	-
skilled worker	2	2	4	26.67
specialised secondary	-	3	3	20.00
completed secondary	1	1	2	13.33

completed specialised secondary	-	2	2	13.33
higher specialised	-	-	-	-
university	1	3	4	26.67
total	4	11	15	100.0

3. An Overall Figure of Average Incomes

Average gross monthly pay:	19 775.- CZK
----------------------------	--------------

4. An Overall Figure of Employment Contracts in 2009

	Number
Starting	1
Leaving	4 (Museum closed from October 1, 2009)

5. Length of Employment Contracts – to December 31, 2009

Length of Contract	Number	%
Up to 5 years	3	20.00
Up to 10 years	4	26.67
Up to 15 years	3	20.00
Up to 20 years	-	-
Over 20 years	5	33.33
total	15	100.0

6. Command of Foreign Languages

There are no requirements at any position for passing a standard language test. Staff members are required to have a general oral and written command of another language.

§ 1 e

Review of Property Managed by the Museum

Property (amount)	17 785 683.47
- of which, value of buildings	12 447 920.10
Amount depreciated by 31.12.2009	5 582 244.15

Depreciation is even (Article 31 a) Act 586/92) based on the entry price of long-term tangible assets (Article 29, Act 586/92).

§ 1 f

Budget Details

	CZK
Contribution for running costs allocated for our organisation within the budget breakdown for 2009	6 967 000.00
Museum income	1 350 000.00
Expenditures	8 317 000.00
An increase in the contribution for running costs by the promoter through adjustments made in the budget to	7 286 000.00
Funds for investments – the ISPROFIN 234112-0332 program, Mobility project – a lift	3 489 053.00

An Overview of Expenditures and Gains

Item	Approved budget (thousand CZK)	Adjusted budget (thousand CZK)	Reality	%
Material consumption	470	470	318.70	67.81
Energy consumption	767	797	873.65	109.62
Goods sold	180	180	374.46	208.03
Repairs and maintenance	400	400	805.11	201.28
Travel expenses	39	39	23.89	61.26
Entertainment expenses	15	15	10.46	69.73
Other services	1 000	1 000	874.07	87.41
Payload	3 476	3 690	3 609.50	97.82
Statutory social security	1 217	1 289	1 170.06	90.77
Statutory social expenditures	69	72	71.19	98.87
Other expenditures	4	4	1.16	29.00
Other expenditures for welfare reasons	196	196	174.22	88.89
Depreciation of long-term tangible assets	484	484		0
Total expenditures	8 317	8 636	8 325.54	96.40

Revenue from sales of services	390	390	280.50	71.94
Revenue from sales of goods	300	300	137.02	45.67
Interests			0.15	0
Foreign exchange gains			0.06	0
Fund accounting	650	650	621.73	95.65
Other gains	10	10		0
Operation contributions and subsidies	6 967	7 286	7 286.00	100
Total revenues	8 317	8 636	8 325.54	96.40

Profit	0	0	0	
---------------	---	---	---	--

Organisation assets and liabilities – on 31.12.2009

Assets		thousand CZK
Long-term low-value assets	(018)	103.64
Other long-term intangible property	(019)	190.40
Accumulated depreciation - Long-term low-value assets	(078)	- 103.64
Long-term tangible assets	(031,021,022, 028)	17 491.65
Accumulated depreciation - Long-term tangible assets	(081,082,088)	- 5 478.61
Articles on stock	(132)	1 260.22
Clients	(311)	0
Advance on operating costs	(314)	430.04
Receivables from employees	(335)	65.07
Petty cash	(261)	6.54
Liquid valuables (stamps and vouchers)	(263)	1.12
Current account	(241)	184.99
FKSP (cultural and social needs fund) current account	(243)	306.72
Deferred expenses	(381)	78.10
Total assets		14 536.24

Liabilities		thousand CZK
Long-term assets fund	(901)	12 203.44
Fund of current assets	(902)	200.00
Remuneration fund	(911)	353.92
Cultural and social needs fund	(912)	395.23
Reserves	(914)	358.50
Investment fund (property reproduction)	(616)	148.17
Accounts payable (suppliers)	(321)	44.48
Other payables	(325)	0.04
Payroll payable (employees)	(331)	221.56
Payables for social security and health insurance	(336)	173.47
Other direct taxes	(342)	34.89
Estimated accrued expenses	(389)	402.54
Profit or loss for the period (profit)	(963)	0
Total liabilities		14 536.24

§ 1 g

Data evaluation and analysis

1. Rationale behind budget provisions

The limit number of the institute employees was fixed to 15 (converted) for 2009 and the level for drawing funds for the salaries and wages was set at 3 446 thousand Czech crowns and other personnel expenses (OPE) at 30 thousand CZK.

By means of budget adjustments Nos. 1, 3 and 6, the funds for wages and salaries were increased to 3 640 thousand CZK. By amendment of the budget No. 6 labour fringe benefits were increased to 50 thousand CZK.

Another binding criterion was the transfer to the national budget of 400 thousand CZK, which the organisation had planned to obtain from the sale of unused lands. The land was sold in early December for the purchase price of 300 thousand CZK. The Purchase contracts and other binding documents were submitted to the Czech Ministry of Culture. The buyer has deposited a sum of 300 thousand CZK at a law office. After approval by the Czech Ministry of Culture and the Czech Ministry of Finances, the money is to be transferred to our account and then to an account of the Ministry of Culture.

2. National budget share in financing the institution

	CZK
Planned running costs	8 317 000.00
- of which, promoter's share	6 967 000.00
Actual running costs	8 325 536.42
- of which, promoter's share	7 286 000.00
Income (excluding promoter's contribution)	1 039 536.42
- of which, renting revenues	25 200.00
Overall accounting of funds	621 734.52
• from reserve fund	312 073.46
- of which, unsecured requirements coverage	312 073.46
- from the tangible assets funds (used as an additional source for the maintenance of tangible assets – windows and doors)	309 661.06

3. Drawing on wage funds

	CZK
Drawn wages and salaries amounted to	3 559 501.00
- not fully used	80 499.00
OPE – drawn	50 000.00
- labour fringe benefits overdrawn	0

4. Research and development

There was no involvement in any scientific research programmes or projects financed from the national budget. Scientific research, made by expert staff as part of their usual working activities, concentrated on exploration necessary for the preparation of new permanent exhibitions and required no special extra expenditures.

5. Expenditures determined for investments (property reproduction)

	CZK
Investment means (SUV) the ISPROFIN program – mobility project – a lift (executed from 1.10.09 to 31.12.09)	3 489 053.00
From own funds – Renault Megan car	10 000.00

Thanks to the funds from the mobility project, it was possible to enable a barrier-free access to the Museum: a lift was installed in house No. 75 and related construction work was done – passages to the Mydlářovský House and ramps for wheelchairs at all levels of the house. The lift will make it possible for people in wheelchairs to visit the Museum but will also be welcome by people who had found it difficult to climb the steep and narrow stairs in Mydlářovský House (senior citizens, children).

6. Repairs and maintenance.

Apart from usual repairs and maintenance work, we spent about 400 thousand CZK in 2009 on repairing and painting the windows and doors in houses Nos. 73, 74 and 75 in Břetislavova Street and 74 thousand CZK on the necessary repair of the roof of house No. 73.

7. Inspections.

In the course of the year, inspections were made in harmony with the plan of inspection activities. From 26.5. to 16.7.2009 a public-administration control was made of the use of finances from the state budget and other means provided by the state. The audit was made by the Financial Office from Hradec Králové, department of financial control. The period that underwent inspection were the years 2007 and 2008. Corrective measures have been taken to remedy minor deficiencies. On 21.9.2009, the District Office of Social Security in Chrudim made a routine check of insurance, health insurance and the fulfilment of tasks in the pension scheme. In January 2010, an internal audit was made of the Museum management in 2009. The audit concentrated on the effective use of finances from the state budget, namely on drawing money for investments (SUV), provided to our organisation within the ISPOFIN 234112 program for project No. 234112-0332 Museum of Puppetry, mobility-lift. No major deficiencies were found during the above controls.

8. Membership in organisations

- Membership in international organisations

- The Museum is a collective member of the Czech Centre of UNIMA, the international puppet organisation, and on top of this, Alena Exnarová an individual UNIMA member and worked in the Plenary Session of the Czech UNIMA Centre and represented the centre in the grants commission for non-professional arts of the Czech Ministry of culture (theatre arts). Membership in this organisation is helpful in making contacts and working with puppeteers, theatres and other specialised institutions in other countries, in obtaining information and articles for museum collections, in exchanging ideas and other puppet-related activities. The Museum does not pay any membership fees (this is done by the shelter Theatre Institute on behalf of the Czech Centre).
- The Museum is a collective member of the Czech Centre of SIBMAS, the international organisation of theatre libraries and museums. This is very useful for exchanging pieces of information. The Museum does not pay any membership fees

- Membership in national organisations

- The Museum is a collective member of the Czech Association of Museums and Galleries.
- Alena Exnarová is a member of the Association of Professional Puppeteers, member of the professional council for puppets at NIPOS-ARTAMA Praha and in 2008 she worked in juries during three regional puppet festivals (Turnov, Chrudim, Hradec Králové), from which the best groups proceed to the nation-wide Puppeteer Festival in Chrudim. She published articles in professional magazines about these festivals and other events (magazines Loutkář, Amatérská scéna, Divadelní hromada). She also worked in the commission for awarding a Prize of the Minister of Culture for non-professional art in theatre-related branches. Since 2009, A. Exnarová has also been member of the committee of a civic association of the Museum of Czech Amateur Theatre, Miletín.

9. Business trips to other countries

There were no business trips to other countries in 2009.

10. Economic Result and the Transfer of Funds into the Reserve Fund

The economic result of 2009 amounted to zero and no funds were transferred into the reserve fund.

§ 1h

Data on recipients of services

(Closed due to construction work connected with the installation of a lift to enable easy access to the museum from October 1, 2009)

Visitors to displays and exhibitions in the Museum

		<u>Number</u>	<u>Ca %</u>
Total number of visitors		14 501	100
- full admission		3 681	26
	- of which adults in groups	0	0
- reduced admission		5 786	40
	- of which, pensioners	771	6
	- number of children in groups	2 852	20
	- individual children and students	1 536	11
	- other reduced fees	188	2

Free-of-charge, total		3 901	27
	- of which, adults	1 310	9
	- of which, children under 6	2 583	18
	- Families of the Fund of Endangered Children	8	0.05
Foreign visitors, total		711	5
Family admission (2 adults + 2 children) –		984	7
Additional charge allowing entry to the tower (possible for groups only)		17	0.01

Where visitors to the Museum in 2009 came from

(numbers of people visiting the Museum on the days of free entry and separate events are not included)

Odkud pocházeli návštěvníci	Uvedeno v %
Chrudim	15
The Region of Pardubice (except Chrudimi)	19
Czech Republic except the Region of Pardubice	61
Foreign countries	5

Number of visitors to mobile exhibitions installed elsewhere: 52 652
- Of which in other countries: 17 298

Number of visitors to all cultural and educational events : 3 336

Visitors for scientific research :

In all, 9 researchers visited the Museum or requested co-operation, of which 3 from other countries: Israel, Portugal.

Conclusion

Thanks for articles donated into Museum collections :

- To Mr . Dadi Pudumjee from India
- To Mr. Igor Rymarenko and to Múzeum bábkárských kultúr a hračiek (Museum of Puppetry and Toys), Modrý Kameň, Slovakia
- To Ms. Nina Malíková and Mr. Alois Tománek from Prague
- To Mr. Jaroslav Doležal from Hradec Králové
- To Mr. Jiří Soukup from Hradec Králové
- To Umělecká scéna Říše loutek Praha (the Artistic Theatre of the Realm of Puppets in Prague)
- To Ms. Eva Podlesná from Prague
- To Mr. Jaroslav Milfajt from Brno
- To Ms. Lenka Schubertová
- To Muzeum českého amatérského divadla (Museum of Czech Amateur Theatre) in Miletín

Thanks for financial and other assistance:

- To the Ministry of Culture of the Czech Republic
- To Mr. Stanislav Fremunt from Prague
and to all other colleagues and supporters

Thanks for a financial contribution for the restoration of puppets

- To the Museum visitors (3 326,- CZK)